

# MATERIALAB CONSULTANTS LIMITED

Room 723 & 725, 7/F, Block B,  
Profit Industrial Building,  
1-15 Kwai Fung Crescent, Kwai Fong,  
Hong Kong.

Tel : +852 2450 8238  
Fax : +852 2450 8032  
E-mail : mcl@fugro.com  
Website : www.fugro.com



## QUARTERLY EM&A REPORT

March 2020 – May 2020

**Client** : Civil Engineering and Development  
Department, HKSAR

**Contract No.** : KLN/2015/07

**Contract Name** : Environmental Monitoring Works for  
Contract KL/2014/03 – Kai Tak Development  
– Stage 3 Infrastructure Works for Developments  
at the Southern Part of the Former Runway

**Report No.** : 0405/15/ED/1259A

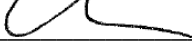
EP-337/2009 New Distributor Roads Serving the Planned Kai Tak  
Development Area

EP-339/2009/A Decommissioning of the Remaining Parts (Ex-GFS  
Building, Radar Station and Hong Kong Aviation Club)  
of the former Kai Tak Airport

EP-451/2013 Trunk Road T2

**Prepared by** : Toby K. H. Wan

**Reviewed by** : Cyrus C. Y. Lai

**Certified by** :   
Colin K. L. Yung  
Environmental Team Leader  
Materialab Consultants Limited

Ref.: CEDKTDS3EM00\_0\_0499L.20

28 July 2020

Hyder-Meinhardt Joint Venture  
17/F, Two Harbour Square,  
180 Wai Yip Street, Kwun Tong  
Kowloon, Hong Kong

By Post and Email

Attention: Mr. Pat Lam

Dear Mr. Lam,

**Re: Contract No. KL/2014/03 – Kai Tak Development – Stage 3 Infrastructure Works for Developments at the Southern Part of the Former Runway Quarterly EM&A Report for March 2020 to May 2020**

Reference is made to the Environmental Team's submission of the Quarterly EM&A Report for March 2020 to May 2020 (Report No. 0405/15/ED/1259A) we received by e-mail on 28 July 2020.

Please be informed that we have no adverse comment on the captioned report.

Thank you for your attention. Please do not hesitate to contact us should you have any queries.

Yours sincerely,  
For and on behalf of  
Ramboll Hong Kong Limited



Manson Yeung  
Independent Environmental Checker

c.c. CEDD  
Fugro  
CRBC

Attn.: Mr. Simon Kwok  
Attn.: Mr. Colin K. L. Yung  
Attn.: Mr. Dickey Yau

Fax: 2739 0076  
By email  
Fax: 2283 1689

Q:\Projects\CEDKTDS3EM00\02\_Proj\_Mgt\02\_Corr\CEDKTDS3EM00\_0\_0499L.20.docx

**TABLE OF CONTENTS**

<b>EXECUTIVE SUMMARY</b>	<b>1</b>
<b>1. INTRODUCTION</b>	<b>2</b>
<b>2. SUMMARY OF EM&amp;A REQUIREMENTS AND MONITORING RESULTS</b>	<b>4</b>
<b>3. LANDSCAPE AND VISUAL</b>	<b>7</b>
<b>4. WASTE MANAGEMENT</b>	<b>8</b>
<b>5. SITE INSPECTION</b>	<b>9</b>
<b>6. ENVIRONMENTAL COMPLAINT AND NON-COMPLIANCE</b>	<b>11</b>
<b>7. IMPLEMENTATION STATUS OF ENVIRONMENTAL MITIGATION MEASURES</b>	<b>13</b>
<b>8. CONCLUSIONS</b>	<b>14</b>

**FIGURES**

Figure 1	Project General Layout
Figure 2	Air and Noise Monitoring Locations

**LIST OF APPENDICES**

Appendix A	Construction Programme
Appendix B	Project Organization Chart
Appendix C	Action and Limit Levels for Air Quality and Noise
Appendix D	Graphical Presentation of Monitoring Data
Appendix E	Waste Flow Table
Appendix F	Environmental Mitigation Implementation Schedule (EMIS)



**EXECUTIVE SUMMARY**

- i. The Civil Engineering and Development Department HKSAR has appointed Materialab Consultants Limited (MCL) to undertake the Environmental Team services for the Project and implement the EM&A works.
- ii. This is the seventeenth Quarterly EM&A Report presents the environmental monitoring and audit works for the period between 1 March 2020 and 31 May 2020. As informed by the Contractor, major activities in the reporting period included:

March 2020	April 2020	May 2020
<ul style="list-style-type: none"> <li>• Excavation and laying of drainage pipe and manhole;</li> <li>• Construction of SUS structure;</li> <li>• Construction of District Cooling System;</li> <li>• Utility laying;</li> <li>• Removal of temporary decking and temporary road pavement;</li> <li>• Construction of road base and road pavement;</li> <li>• Landscape works – Irrigation system, tree planting.</li> </ul>	<ul style="list-style-type: none"> <li>• Excavation and laying of drainage pipe and manhole;</li> <li>• Construction of SUS structure;</li> <li>• Construction of District Cooling System;</li> <li>• Utility laying;</li> <li>• Construction of road base and road pavement;</li> <li>• Landscape works – Irrigation system, tree planting.</li> </ul>	<ul style="list-style-type: none"> <li>• Excavation and laying of drainage pipe and manhole;</li> <li>• Construction of SUS structure;</li> <li>• Construction of District Cooling System;</li> <li>• Utility laying;</li> <li>• Construction of road base and road pavement;</li> <li>• Landscape works – Irrigation system, tree and shrub planting.</li> </ul>

**Breaches of the Action and Limit Levels**

- iii. No Action and Limit Level exceedance for 24-hr TSP and noise was recorded in the reporting period at all monitoring stations.

**Complaint, Notification of Summons and Successful Prosecution**

- iv. No environmental complaint and no notification of summons and successful prosecution were received in the reporting period.

## 1. INTRODUCTION

### 1.1 Background

1.1.1 The Kai Tak Development is located in the south-eastern part of Kowloon Peninsula of the HKSAR, comprising the apron and runway areas of the former Kai Tak Airport and existing waterfront areas at To Kwa Wan, Ma Tau Kok, Kowloon Bay, Kwun Tong and Cha Kwo Ling.

1.1.2 Contract No. KL/2014/03 is the works package to construct an approximately 420m long supporting underground structure (SUS) underneath Shing Cheong Road and Cheung Yip Street. The EM&A programme under this Contract is governed by three EPs (EP-337/2009, EP-339/2009/A and EP-451/2013) and two EM&A Manuals (AEIAR-130/2009 and AEIAR-174/2013). The Works to be executed under this Contract and corresponding EPs include but not be limited to the following main items:

#### **EP-451/2013 – Trunk Road T2**

(i) Construction of approximately 420m long supporting underground structure (SUS) including diaphragm walls, barrettes, piled foundation, top and bottom slabs, end wall and adits underneath Shing Cheong Road and Cheung Yip Street;

#### **EP-337/2009 – New Distributor Roads Serving the Planned Kai Tak Development**

- (ii) Widening and re-alignment of Cheung Yip Street of approximately 330m long and associated footpaths;
- (iii) Demolition, reconstruction and widening of Shing Cheong Road of approximately 410m long and associated footpaths;
- (iv) Construction of drainage outfall and modification of existing seawall;
- (v) Construction of ancillary works including surface drainage, sewerage, water, fire fighting, street lighting, street furniture, road marking, road signage, utilities and services, irrigation and landscape works.

#### **EP-339/2009/A – Decommissioning of the Remaining Parts (Ex-GFS Building, Radar Station and Hong Kong Aviation Club) of the former Kai Tak Airport**

(vi) Demolition of RADAR Tower and guard house;

#### **Other works not covered by any EP**

- (vii) Construction of two subways between Phase II of New Acute Hospital (Site A) and Hong Kong Children's Hospital (Site C), and between Phase I of New Acute Hospital (Site B) and Site C;
- (viii) Construction of District Cooling System (DCS) along Cheung Yip Street and Shing Cheong Road

1.1.3 The location and boundary of the site is shown in **Figure 1**.

1.1.4 This Quarterly EM&A report is required under Section 16.1.2 and 16.7.1 of the EM&A Manual AEIAR-130/2009. It is to report the results and findings of the EM&A programme required in the EM&A Manual.

1.1.5 This is the seventeenth Quarterly EM&A Report which summaries the impact monitoring results and audit findings for the Project within the period between 1 March 2020 and 31 May 2020.



**1.2 Project Organization**

1.2.1 The project proponent was the Civil Engineering and Development Department, HKSAR (CEDD). Hyder Meinhardt Joint Venture (HMJV) was commissioned by CEDD as the Engineer for the Project. Ramboll Hong Kong Limited was commissioned as the Independent Environmental Checker (IEC). China Road and Bridge Corporation (Hong Kong) (CRBC) was appointed as the main contractor for the construction works under the contract KL/2014/03. MaterialLab Consultants Limited (MCL) was appointed as the Environmental Team (ET) by CEDD to implement the EM&A programme for the Project.

1.2.2 The organization structure is shown in **Appendix B**. The key personnel contact names and numbers for the Project are summarized in **Table 1.1**.

**Table 1.1 Contact Information of Key Personnel**

Party	Position	Name	Telephone	Fax
Project Proponent (CEDD)	Engineer	Mr. Simon Kwok	3842 7140	2739 0076
Engineer's Representative (HMJV)	Senior Resident Engineer	Mr. Pat Lam	3742 3803	3742 3899
IEC (Ramboll Hong Kong Limited)	Independent Environmental Checker (until 25 May 2020)	Mr. F. C. Tsang	3465 2851	3465 2899
	Independent Environmental Checker (from 26 May 2020)	Mr. Manson Yeung	9700 6767	3465 2899
Main Contractor (CRBC)	Site Agent	Mr. Yau Kwok Kiu, Dickey	5699 4503	2283 1689
	Environmental Officer	Miss. Elena Lai	6841 3324	2283 1689
ET (MCL)	Environmental Team Leader	Mr. Colin Yung	3565 4114	3565 4160

**1.3 Construction Programme and Activities**

1.3.1 The construction of the Project commenced in February 2016 and is expected to complete in 2020. The construction programme is shown in **Appendix A**. A summary of the major construction activities undertaken in the reporting period were:

March 2020	April 2020	May 2020
<ul style="list-style-type: none"> <li>Excavation and laying of drainage pipe and manhole;</li> <li>Construction of SUS structure;</li> <li>Construction of District Cooling System;</li> <li>Utility laying;</li> <li>Removal of temporary decking and temporary road pavement;</li> <li>Construction of road base and road pavement;</li> <li>Landscape works – Irrigation system, tree planting.</li> </ul>	<ul style="list-style-type: none"> <li>Excavation and laying of drainage pipe and manhole;</li> <li>Construction of SUS structure;</li> <li>Construction of District Cooling System;</li> <li>Utility laying;</li> <li>Construction of road base and road pavement;</li> <li>Landscape works – Irrigation system, tree planting.</li> </ul>	<ul style="list-style-type: none"> <li>Excavation and laying of drainage pipe and manhole;</li> <li>Construction of SUS structure;</li> <li>Construction of District Cooling System;</li> <li>Utility laying;</li> <li>Construction of road base and road pavement;</li> <li>Landscape works – Irrigation system, tree and shrub planting.</li> </ul>



**2. SUMMARY OF EM&A REQUIREMENTS AND MONITORING RESULTS**

**2.1 Monitoring Requirement**

In accordance with the approved EM&A Manuals, 24-hour Total Suspended Particulates (TSP) level and Leq (30min) at the designated monitoring stations is required. Impact 24-hour TSP monitoring should be carried out at least once every 6 days. In case of complaints, 1-hour TSP monitoring should be carried out at least 3 times per 6 days when the highest dust impacts are likely to occur. Leq (30min) monitoring is conducted for at least once a week during the construction phase between 0700 and 1900 on normal weekdays. The Action and Limit Levels of the air quality monitoring and noise monitoring are given in **Appendix C**

**2.2 Monitoring Locations**

2.2.1 According to the EM&A Manual, three monitoring locations for air quality monitoring and noise monitoring, namely KTD1, KTD2 and KER1, are covered by this Contract within the South Apron Area of Former Kai Tak Airport. The other two air quality monitoring locations and two noise monitoring locations which are identified in Cha Kwo Ling area, are farther than 500m and 300m away from the site boundary respectively and thus not covered by this Contract. The monitoring works in Cha Kwo Ling area are covered by other Contract(s) respectively.

2.2.2 According to the approved alternative baseline air quality and noise monitoring locations (EPD reference: EP2/K19/A/21 Pt.5), the original monitoring locations (KTD1, KTD2 and KER1) are proposed to be replaced by alternative monitoring locations (KTD1a, KTD2a and KER1a).

2.2.3 According to the approved relocation of monitoring location KER1a (EPD reference: () in EP2/K19/A/21 Pt.5), the monitoring location KER1a are proposed to be relocated by alternative monitoring locations KER1b.

2.2.4 According to the approved relocation of monitoring location KTD2a (EPD reference: () in EP2/K19/A/21 Pt.6), the monitoring location KTD2a are proposed to be relocated by alternative monitoring locations KTD2b.

2.2.5 According to the approved relocation of monitoring location KTD2b (EPD reference: () in EP2/K19/A/21 pt.7), the monitoring location KTD2b are proposed to be relocated by alternative monitoring location KTD2c for air quality monitoring.

2.2.6 The most updated locations are summarized in **Table 2.1** and shown in **Figure 2**.

**Table 2.1 Location of Air Quality Monitoring and Noise Monitoring Station**

Monitoring Station	Location
KTD1a	Centre of Excellence in Paediatrics (Children’s Hospital)
KTD2b	G/IC Zone next to Kwun Tong Bypass (Next to the site of the New Acute Hospital)
KTD2c	G/IC Zone next to Kwun Tong Bypass (Next to the Kowloon Bay Sewage Interception Station)
KER1b	Site Boundary at Cheung Yip Street



**2.3 Results and Observations**

- 2.3.1 No Action and Limit Level exceedance for 24-hr TSP was recorded in the reporting period at all monitoring stations.
- 2.3.2 No Action / Limit Level exceedance for construction noise was recorded in the reporting period at all monitoring stations.
- 2.3.3 No raining and wind with speed over 5 m/s was observed during noise monitoring according to the onsite observation.
- 2.3.4 During the reporting period, at KTD1a, project related construction activities and road traffic along Shing Fung Road and Shing Cheong Road were observed in the surroundings. At KTD2b / KTD2c, road traffic along the Kwun Tong By-pass and non-project related construction activities at the nearby construction site was observed. At KER1b, project related construction activities, road traffic along Cheung Yip Street and non-project related construction activities at the nearby construction site was observed. Major noise sources including noise emission from plant & PME and some other construction activities, travel of vehicles, loading and unloading of C&D waste were observed in the site. The above factors may affect the monitoring results.
- 2.3.5 Graphical presentation of the monitoring data in the reporting period is presented in **Appendix D**.

**2.4 Comparison of Monitoring Results with EIA Predictions**

- 2.4.1 The monitoring data was compared with the EIA predictions as summarized in **Table 2.2** and **Table 2.3**.

**Table 2.2 Comparison of 24-hr TSP data with EIA predictions**

Monitoring Station	Receiver Reference	Predicted Maximum 24-hour TSP Concentration (µg/m <sup>3</sup> )	24-hour TSP concentration in Reporting Period (µg/ m <sup>3</sup> )			Average 24-hour TSP concentration in Reporting Period (µg/ m <sup>3</sup> )		
			Mar 2020	Apr 2020	May 2020	Mar 2020	Apr 2020	May 2020
KTD1a	KTD3	126	55-94	35-176	38-63	71	90	53
KTD2b/ KTD2c	-	-	52-156	25-137	52-80	89	80	65
KER1b	KTD6	169	27-97	64-148	17-68	60	98	54

Note:  
 For KTD2b / KTD2c, there was no receiver reference in the EIA report, AEIAR-174/2013.  
 Predicted Maximum TSP Concentration extracted from Table 4.14 of EIA Report, AEIAR-174/2013.

**Table 2.3 Comparison of Noise Monitoring data with EIA predictions**

Monitoring Station	Receiver Reference	Maximum Predicted Mitigated Construction Noise Level, dB(A)	Leq (30min) dB(A) in Reporting Period		
			Mar 2020	Apr 2020	May 2020
KTD1a	KTD1	74	68-72	68-71	66-68
KTD2b/ KTD2c	-	-	69-74	68-75	73-75
KER1b	KER1	75	70-73	68-74	71-74

Note:  
 Maximum Predicted Mitigated Construction Noise Level extracted from Table 5.13 of EIA Report, AEIAR-174/2013.



## MATERIALAB CONSULTANTS LIMITED

Room 723 & 725, 7/F, Block B,  
Profit Industrial Building,  
1-15 Kwai Fung Crescent, Kwai Fong,  
Hong Kong.

Tel : +852 2450 8238  
Fax : +852 2450 8032  
E-mail : mcl@fugro.com  
Website : www.fugro.com



- 2.4.2 The 24-hour TSP monitoring results at KER1b in the reporting months did not exceed the Predicted Maximum 24-hour TSP Concentration in the approved Environmental Impact Assessment (EIA) Report and no Action / Limit Level exceedance was recorded in the reporting period.
- 2.4.3 The 24-hour TSP monitoring result of KTD1a on 15 April 2020 exceeded the prediction in the approved EIA report. No project related dust source was observed during the site monitoring. The discrepancy between the 24-hour TSP concentration and EIA Prediction in KTD1a is considered due to dust source from the non-project related construction activities near the monitoring station and the road traffic along Shing Fung Road.
- 2.4.4 The noise monitoring results in the reporting months did not exceed the Maximum Predicted Mitigated Construction Noise Level in the approved Environmental Impact Assessment (EIA) Report and no Action / Limit Level exceedance was recorded in the reporting period.

## MATERIALAB CONSULTANTS LIMITED

Room 723 & 725, 7/F, Block B,  
Profit Industrial Building,  
1-15 Kwai Fung Crescent, Kwai Fong,  
Hong Kong.

Tel : +852 2450 8238  
Fax : +852 2450 8032  
E-mail : mcl@fugro.com  
Website : www.fugro.com



### 3. LANDSCAPE AND VISUAL

#### 3.1 Results and Observations

- 3.1.1 To monitor and audit the implementation of landscape and visual mitigation measures, 13 weekly Landscape and Visual Site audits were carried out and 7 of them were carried out by a Registered Landscape Architect. The weekly Landscape and Visual Impact reports were counter-signed by IEC as according to the requirement of EM&A Manual (AEIAR-130/2009).
- 3.1.2 During the site audit on 15 April 2020, the contractor was reminded the construction materials should be tidy up.
- 3.1.3 Observations and recommendations during site audits are summarized in **Table 5.1**.



## **4. WASTE MANAGEMENT**

### **4.1 Results and Observations**

- 4.1.1 C&D materials and wastes sorting were carried out on site. Receptacles were available for C&D wastes and general refuse collection.
- 4.1.2 The amount of wastes generated by the site activities in the reporting period is shown in **Appendix E**.
- 4.1.3 The Contractor is advised to properly maintain on site C&D materials and wastes collection, sorting and recording system and maximize reuse / recycle of C&D materials and wastes. The Contractor is reminded to properly maintain the site tidiness and dispose of the wastes accumulated on site regularly and properly.
- 4.1.4 The Contractor is reminded that chemical waste containers should be properly treated and stored temporarily in designated chemical waste storage area on site in accordance with the Code of Practice on the Packaging, Labelling and Storage of Chemical Wastes.



## **5. SITE INSPECTION**

### **5.1 Site Inspection**

- 5.1.1 Site inspections were carried out weekly to monitor the implementation of proper environmental pollution control and mitigation measures for the Project. A summary of the mitigation measures implementation schedule is provided in **Appendix F**.
- 5.1.2 In the reporting quarter, 13 site inspections were carried out. 6 of them were the joint inspections with the IEC, ER, the Contractor and the ET.
- 5.1.3 All the follow-up actions requested by Contractor's ET and IEC during the site inspections were undertaken as reported by the Contractor and confirmed in the following weekly site inspection conducted during the reporting month.
- 5.1.4 Details of observations recorded during the site inspections are presented in **Table 5.1**.



**Table 5.1 Observations and Recommendations of Site Audit**

Parameters	Date	Observations and Recommendations	Follow-up
Air Quality	11 March 2020	Reminder: Dusty material should be covered. (Zone 4)	NA
	15 April 2020	Reminder: All dusty materials should be fully covered.	NA
Noise	NA		
Water Quality	NA		
Chemical and Waste Management	22 April 2020	Reminder: All chemical waste should be stored properly.	NA
	29 April 2020	Reminder 1: All chemical waste should be stored properly. (Zone 4)	NA
	29 April 2020	Reminder 2: All waste generated at the site should be cleared. (Zone 4)	NA
Land Contamination	NA		
Landscape and Visual Impact	15 April 2020	Observation Construction materials should be tidy up.	22 April 2020
General	NA		
Permit / Licenses	7 May 2020	Reminder: NRMM labels should be provided to replace the substandard label. (Zone 1)	NA



**6. ENVIRONMENTAL COMPLAINT AND NON-COMPLIANCE**

**6.1 Environmental Exceedance**

6.1.1 No Action and Limit Level exceedance for 24-hr TSP and noise was recorded in the reporting period at all monitoring stations. Number of exceedance in the reporting period was summarized in **Table 6.1**.

**Table 6.1 Summary of Exceedance in Reporting Period**

Monitoring Station		Number of exceedance in the reporting period						Total
		24hr TSP µg/m <sup>3</sup>			Leq (30min) dB(A)			
		Mar 2020	Apr 2020	May 2020	Mar 2020	Apr 2020	May 2020	
KTD1a	AL	0	0	0	0	0	0	0
	LL	0	0	0	0	0	0	0
KTD2b/ KTD2c	AL	0	0	0	0	0	0	0
	LL	0	0	0	0	0	0	0
KER1b	AL	0	0	0	0	0	0	0
	LL	0	0	0	0	0	0	0
Total	AL	0	0	0	0	0	0	0
	LL	0	0	0	0	0	0	0

**6.2 Complaints, Notification of Summons and Prosecution**

6.2.1 No inspection notice, notification of summons or prosecution was received in this reporting period. Cumulative complaint log, summaries of complaints, notification of summons and successful prosecutions are presented in **Table 6.2, 6.3 and 6.4**.

**Table 6.2 Environmental Complaints Log**

Reference No.	Date of Complaint Received	Received From	Received By	Nature of Complaint	Date of Investigation	Outcome	Date of Reply
20161207_complaint_c	7 Dec 2016	EPD	Andy Choy (CRBC)	Air	13 Feb 2017	Project-related	13 Feb 2017
20170209_complaint_c	9 Feb 2017	EPD	Andy Choy (CRBC)	Air	22 Feb 2017	Not Project-related	7 Mar 2017
20170502_complaint_c	2 May 2017	CEDD	Andy Choy (CRBC)	Noise	4 May 2017	Not Valid	22 May 2017
20170716_complaint_a	16 Jul 2017	CEDD	HMJV	Water Quality	4 Aug 2017	Not Project-related	4 Aug 2017
20180530_complaint	30 May 2018	EPD	CRBC	Air	9 June 2018	Not Valid	20 Jun 2018

**MATERIALAB CONSULTANTS LIMITED**

Room 723 & 725, 7/F, Block B,  
 Profit Industrial Building,  
 1-15 Kwai Fung Crescent, Kwai Fong,  
 Hong Kong.

Tel : +852 2450 8238  
 Fax : +852 2450 8032  
 E-mail : mcl@fugro.com  
 Website : www.fugro.com

**Table 6.3 Cumulative Statistics on Complaints**

Environmental Parameters	Cumulative No. Brought Forward	No. of Complaints in the Reporting Period			Cumulative Project-to-Date
		March 2020	April 2020	May 2020	
Air	3	0	0	0	3
Noise	1	0	0	0	1
Water	1	0	0	0	1
Waste	0	0	0	0	0
Total	0	0	0	0	0

**Table 6.4 Cumulative Statistics on Successful Prosecutions**

Environmental Parameters	Cumulative No. Brought Forward	No. of Complaints This Reporting Period			Cumulative Project-to-Date
		March 2020	April 2020	May 2020	
Air	0	0	0	0	0
Noise	0	0	0	0	0
Water	0	0	0	0	0
Waste	0	0	0	0	0
Total	0	0	0	0	0

## MATERIALAB CONSULTANTS LIMITED

Room 723 & 725, 7/F, Block B,  
Profit Industrial Building,  
1-15 Kwai Fung Crescent, Kwai Fong,  
Hong Kong.

Tel : +852 2450 8238  
Fax : +852 2450 8032  
E-mail : mcl@fugro.com  
Website : www.fugro.com



## 7. IMPLEMENTATION STATUS OF ENVIRONMENTAL MITIGATION MEASURES

### 7.1 Implementation Status

- 7.1.1 The Contractor has implemented environmental mitigation measures and requirements as stated in the EIA Reports, the EP and the EM&A Manuals. The implementation status of the mitigation measures during the reporting period is summarized in **Appendix F**.





## **8. CONCLUSIONS**

- 8.1.1 No Action and Limit Level exceedance for 24-hr TSP and noise was recorded in the reporting period at all monitoring stations.
- 8.1.2 No complaint of air quality was received. Therefore, no impact 1-hour TSP monitoring was conducted in the reporting period.
- 8.1.3 13 weekly environmental site inspections were carried out in the reporting period. Recommendations on mitigation measures on air quality, chemical and waste management, landscape and visual impact and permit / licenses were given to the Contractor for remediating the deficiencies identified during the site inspections.
- 8.1.4 13 weekly Landscape and Visual Site audits were carried out on in the reporting period and 7 of them were carried out by a Registered Landscape Architect in the reporting period. The weekly Landscape and Visual Impact reports were counter-signed by IEC as according to the requirement of EM&A Manual (AEIAR-130/2009). No non-compliance was recorded in the weekly Landscape and Visual Site audits in the reporting period.
- 8.1.5 Referring to the Contractor's information, no notification of summons and successful prosecution was received in the reporting period.

### **8.2 Comment and Recommendations**

- 8.2.1 The recommended environmental mitigation measures, as proposed in the EIA reports and EM&A Manuals shall be effectively implemented to minimize the potential environmental impacts from the Project. The EM&A programme would effectively monitor the environmental impacts generated from the construction activities and ensure the proper implementation of mitigation measures.
- 8.2.2 According to the environmental audit performed in the reporting period, the following recommendations were made:

#### Air Quality Impact

- All dusty materials should be fully covered.

#### Construction Noise Impact

- No specific observation was identified in the reporting period.

#### Water Quality Impact

- No specific observation was identified in the reporting period.

#### Chemical and Waste Management

- All chemical waste should be stored properly.
- All waste generated at the site should be cleared.

## MATERIALAB CONSULTANTS LIMITED

Room 723 & 725, 7/F, Block B,  
Profit Industrial Building,  
1-15 Kwai Fung Crescent, Kwai Fong,  
Hong Kong.

Tel : +852 2450 8238  
Fax : +852 2450 8032  
E-mail : mcl@fugro.com  
Website : www.fugro.com



### Land Contamination

- No specific observation was identified in the reporting period.

### Landscape and Visual Impact

- Construction materials should be tidy up.

### General Condition

- No specific observation was identified in the reporting period.

### Permit / Licenses

- NRMM labels should be provided to replace the substandard label.

## **MATERIALAB CONSULTANTS LIMITED**

Room 723 & 725, 7/F, Block B,  
Profit Industrial Building,  
1-15 Kwai Fung Crescent, Kwai Fong,  
Hong Kong.

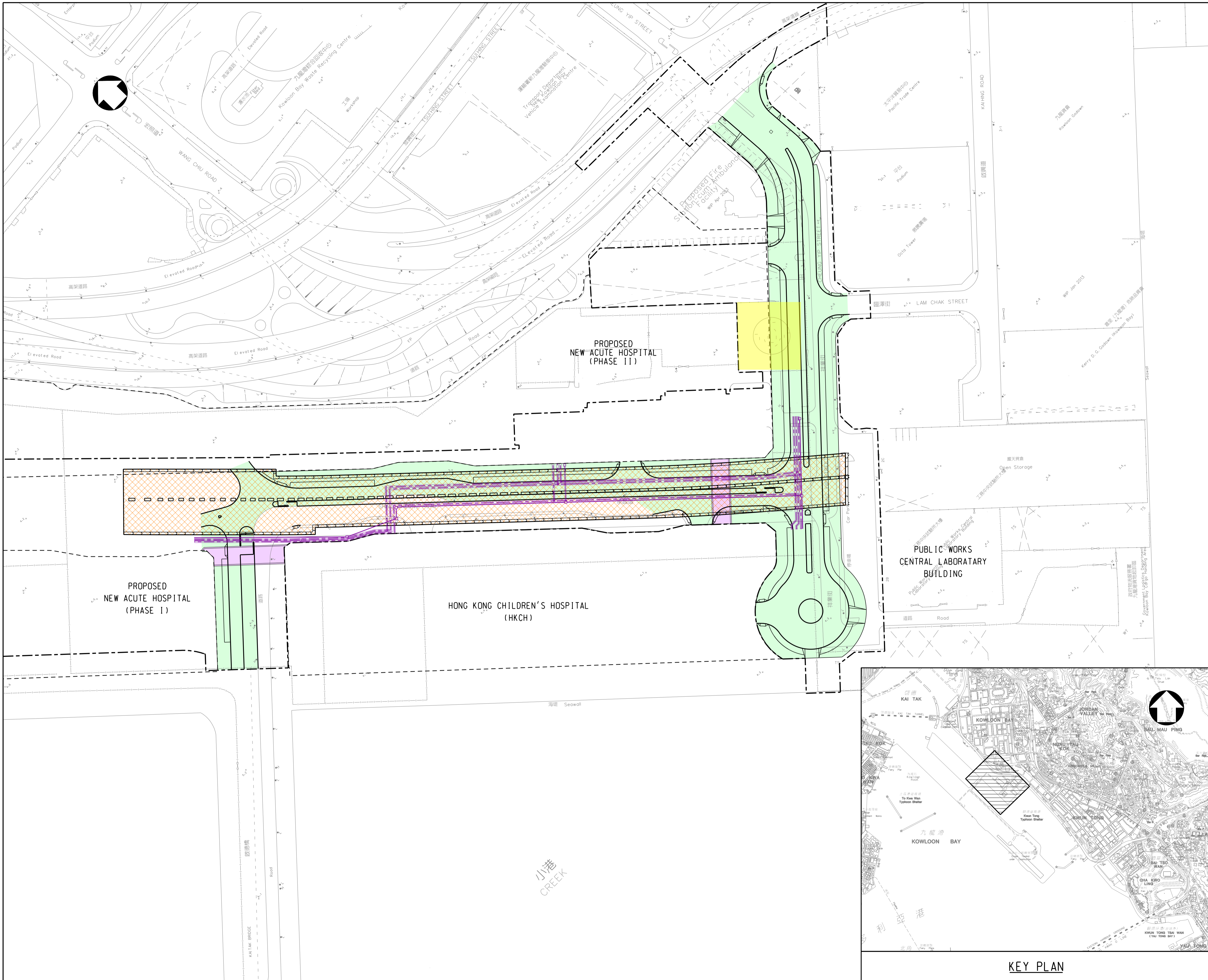
Tel : +852 2450 8238  
Fax : +852 2450 8032  
E-mail : [mcl@fugro.com](mailto:mcl@fugro.com)  
Website : [www.fugro.com](http://www.fugro.com)

---



### **Figure 1**

### **Project General Layout**



- LEGENDS:**
- SITE BOUNDARY
  - HOSPITAL SITE BOUNDARY
  - PROPOSED SUPPORTING UNDERGROUND STRUCTURE
  - PROPOSED SUBWAYS
  - PROPOSED ROADWORKS
  - PROPOSED DISTRICT COOLING SYSTEM
  - DEMOLITION OF RADAR TOWER

Rev.	Date	Drawn	Description	Checked	Approved

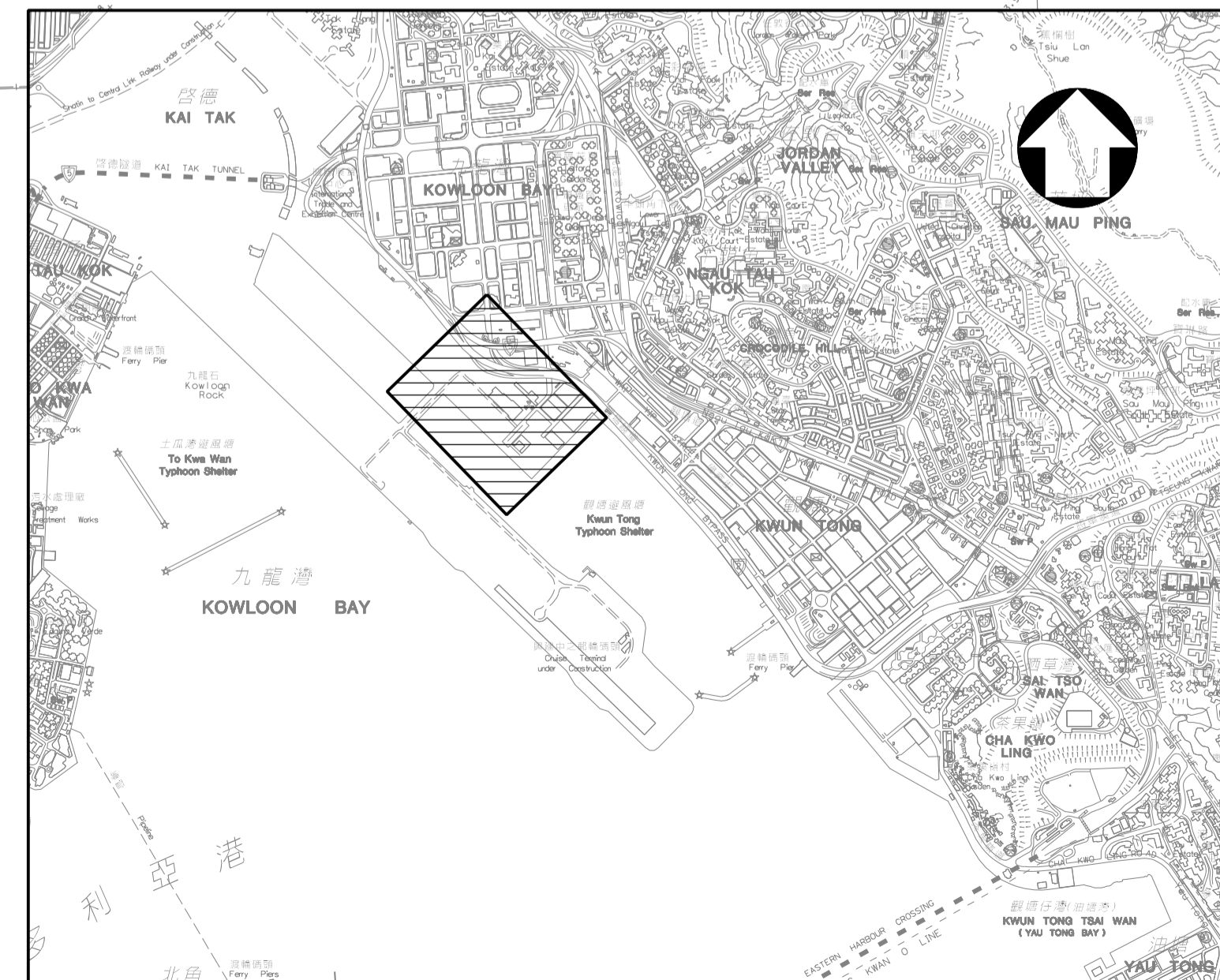


**PROJECT**  
 CONTRACT NO. KL/2014/03  
 KAI TAK DEVELOPMENT - STAGE 3  
 INFRASTRUCTURE WORKS FOR  
 DEVELOPMENTS AT THE SOUTHERN PART OF  
 THE FORMER RUNWAY

**TITLE**  
 GENERAL LAYOUT PLAN

DESIGNED	ENG. CHECK		
DRAWN	COORDINATION		
DWG. CHECK	APPROVED		
SCALE AT A1 1 : 1000	STATUS		REV A

**Drawing No.**  
 FIGURE 1.0  
 © Copyright reserved



**KEY PLAN**

## **MATERIALAB CONSULTANTS LIMITED**

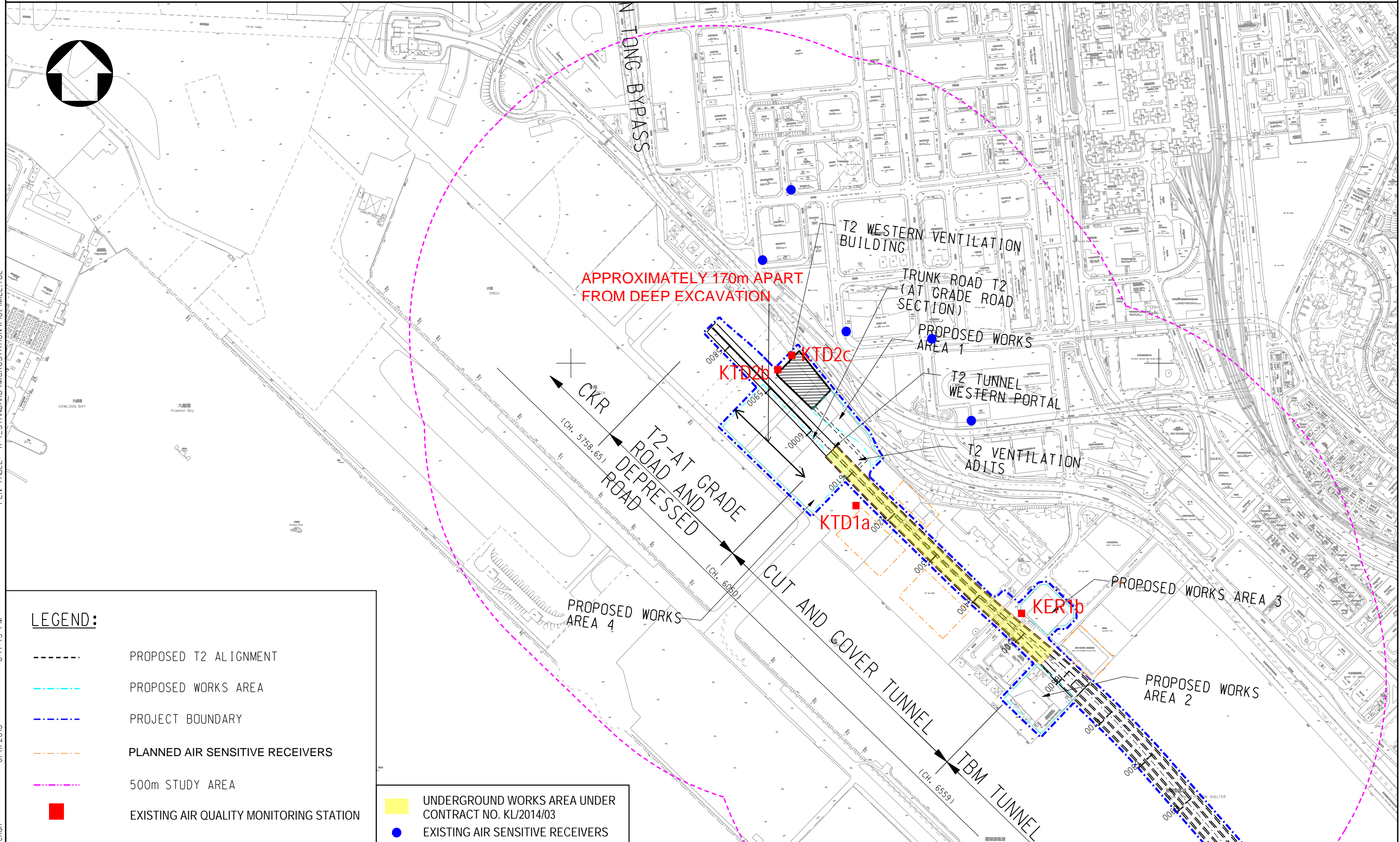
Room 723 & 725, 7/F, Block B,  
Profit Industrial Building,  
1-15 Kwai Fung Crescent, Kwai Fong,  
Hong Kong.

Tel : +852 2450 8238  
Fax : +852 2450 8032  
E-mail : [mcl@fugro.com](mailto:mcl@fugro.com)  
Website : [www.fugro.com](http://www.fugro.com)



### **Figure 2**

#### **Air and Noise Monitoring Locations**



**LEGEND:**

- PROPOSED T2 ALIGNMENT
- PROPOSED WORKS AREA
- PROJECT BOUNDARY
- PLANNED AIR SENSITIVE RECEIVERS
- 500m STUDY AREA
- EXISTING AIR QUALITY MONITORING STATION
- UNDERGROUND WORKS AREA UNDER CONTRACT NO. KL/2014/03
- EXISTING AIR SENSITIVE RECEIVERS

Drawing title

IDENTIFIED DUST MONITORING STATIONS AT SOUTH APRON OF FORMER KAI TAK AIRPORT

Original Size

A3

Scale 1 : 6000

Date 30/01/2012

File name

© Copyright reserved

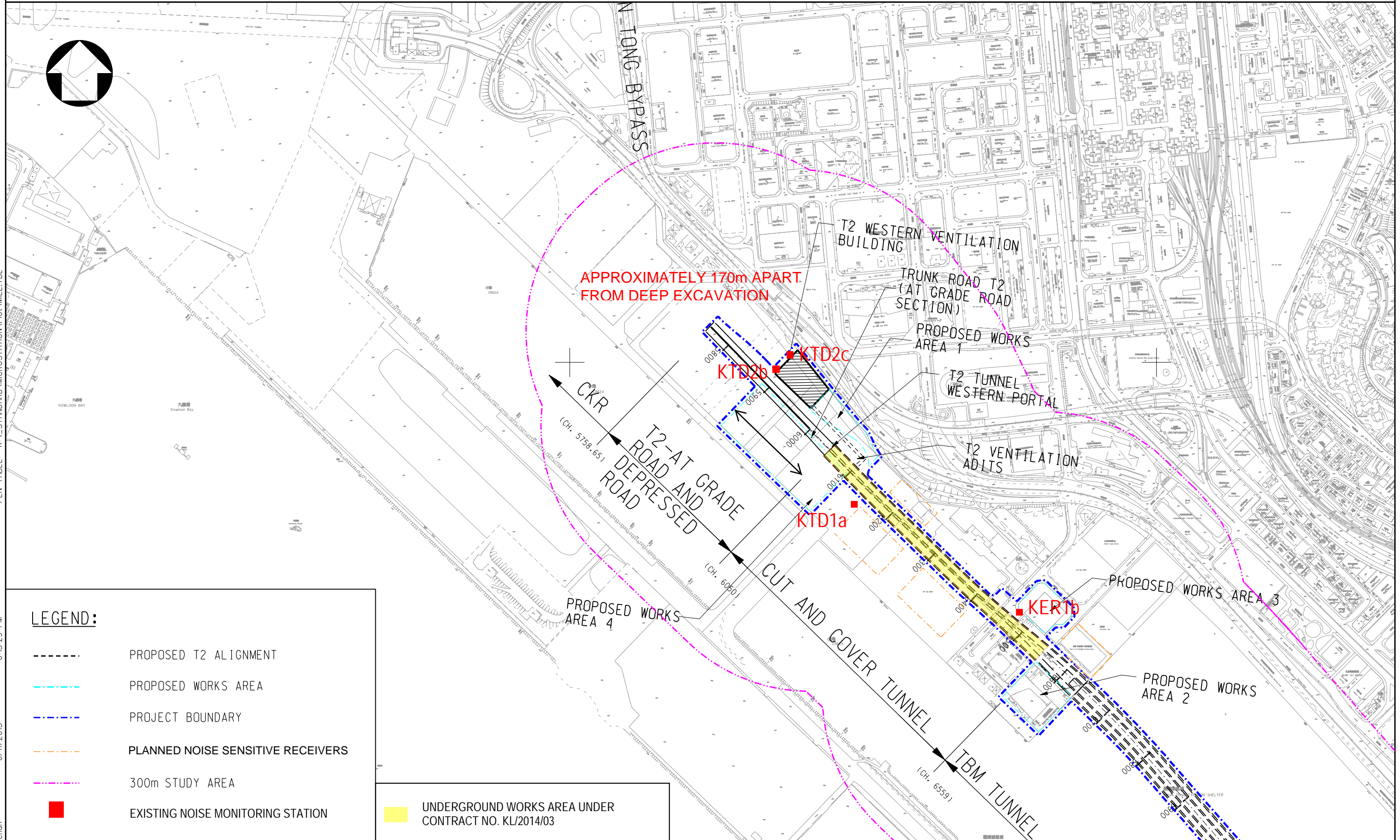
Drawing No.

FIGURE 2.1a(revised)

Rev.

--

Rev.	Description	Date



**LEGEND:**

- PROPOSED T2 ALIGNMENT
- PROPOSED WORKS AREA
- PROJECT BOUNDARY
- PLANNED NOISE SENSITIVE RECEIVERS
- 300m STUDY AREA
- EXISTING NOISE MONITORING STATION

UNDERGROUND WORKS AREA UNDER CONTRACT NO. KL/2014/03

PRINTER NAME: PDFCreator  
 PLOT\_DRV: k:\91164 Trunk Road T2\Cad Admin\A3\_colour.plt  
 PRINTED BY: kitchen  
 6/11/2013 6:15:29 PM

Drawing title		Original Size	A3	Scale	1 : 6000	Date	30/01/2012
IDENTIFIED NOISE MONITORING STATIONS AT SOUTH APRON OF FORMER KAI TAK AIRPORT		© Copyright reserved		File name		Drawing No.	
Rev.	Description	Date	FIGURE 2.2 a (revised)		Rev. --		

## **MATERIALAB CONSULTANTS LIMITED**

Room 723 & 725, 7/F, Block B,  
Profit Industrial Building,  
1-15 Kwai Fung Crescent, Kwai Fong,  
Hong Kong.

Tel : +852 2450 8238  
Fax : +852 2450 8032  
E-mail : [mcl@fugro.com](mailto:mcl@fugro.com)  
Website : [www.fugro.com](http://www.fugro.com)

---



### **Appendix A**

### **Construction Programme**



Activity ID	Activity Name	Rem Dur	Start	Finish	February		March				April			May				Line
					56	23	01	08	15	22	29	05	12	19	26	03	10	

**KL/2014/03-Stage 3 Infrastructure Works for Developments at the Southern Part of the Former Runway**

Project Key Dates					
Project Completion Date					
K-PK-PCD-1000	Section 1-Remainder of the Works (i.e. all Works except Works included in other Section of the Work)	0		29-Feb-20*	◆ Section 1-Remainder of the Works (i.e. all Works except Works included in other Section of the Work)
K-PK-PCD-1300	Section 3 - Construction of District Cooling System (DCS)	0		29-Feb-20*	◆ Section 3 - Construction of District Cooling System (DCS)
K-PK-PCD-1600	Section 5 - Completion of All Landscape Softworks	0		29-Feb-20*	◆ Section 5 - Completion of All Landscape Softworks
K-PK-PCD-1800	Section 7 - Preservation and Protection of Existing Trees	0		29-Feb-20*	◆ Section 7 - Preservation and Protection of Existing Trees

Site Handover Date					
K-PK-SHD-1000	Portion A	0		29-Feb-20*	◆ Portion A
K-PK-SHD-1400	Portion D	0		29-Feb-20*	◆ Portion D
K-PK-SHD-1500	Portion E	0		29-Feb-20*	◆ Portion E
K-PK-SHD-1600	Portion F	0		29-Feb-20*	◆ Portion F
K-PK-SHD-1900	Portion K	0		29-Feb-20*	◆ Portion K
K-PK-SHD-2000	Portion M	0		29-Feb-20*	◆ Portion M
K-PK-SHD-2200	Portion O	0		29-Feb-20*	◆ Portion O
K-PK-SHD-2500	Portion R	0		29-Feb-20*	◆ Portion R
K-PK-SHD-2600	Portion X	0		22-Apr-20*	◆ Portion X

General Submission					
Interfacing Works					
K-PA-INT-5000	Joint inspection and handover for DCS Contract/ EMSD	4	14-Apr-20	17-Apr-20	■ Joint inspection and handover for DCS Contract/ EMSD
K-PA-INT-6000	Joint inspection and handover for road works, street furniture and lighting to HyD	4	28-Apr-20	04-May-20	■ Joint inspection and handover for road works
K-PA-INT-6010	Joint inspection and handover for traffic signal system to TD/EMSD	4	23-Apr-20	27-Apr-20	■ Joint inspection and handover for traffic signal system

Preliminaries					
K-DR-PRE-1800	Submission of time-lapsed photographs and video	54	20-Feb-16 A	22-Apr-20	■ Submission of time-lapsed photographs and video

Section 1 of the Works-Remainder of the Works					
Roadwork and Drainage Works					
Road D4-3 (Ching Shung Road)					
Zone 1 & 2 and Shing Fung Road R & D Works (Stage 3) CH410-CH340					
SCR2815	Installation of kerb at Zone 2 CH410-CH340 central divider	7	05-Feb-20 A	07-Mar-20	■ Installation of kerb at Zone 2 CH410-CH340 central divider
SCR2818	Construction of U-channel and footpath at Shing Fung Road left side	8	23-Dec-19 A	17-Mar-20	■ Construction of U-channel and footpath at Shing Fung Road left side
SCR2820	Installation of kerb at Shing Fung Road central divider	6	19-Oct-19 A	24-Mar-20	■ Installation of kerb at Shing Fung Road central divider
SCR2835	Carry out and complete remaining works	7	25-Mar-20	01-Apr-20	■ Carry out and complete remaining works

<p>中國路橋工程有限責任公司 CHINA ROAD AND BRIDGE CORPORATION</p>	<ul style="list-style-type: none"> <li>◆ Milestone</li> <li>■ Critical Activity</li> <li>■ Non-Critical Activity</li> <li>■ Remaining Level of Effort</li> <li>■ Actual Work</li> </ul>	<h2>3 MRP Mar 2020 - May 2020</h2> <p>Page 1 of 3</p>	<p>Project ID :51 3MRP Mar - May 20 Layout : KL201403 3MRP-1 Page 1 of 3</p>	3 Months Rolling Programme			
				Date	Revision	Checked	Approved
				29-Feb-20	Mar 20 - May 20		

Activity ID	Activity Name	Rem Dur	Start	Finish	February		March				April				May				Line
					56	23	01	08	15	22	29	05	12	19	26	03	10	17	
<b>Zone 3 R &amp; D Works (Stage 2) CH270 to 190</b>																			
SCR1860	Carry out and complete remaining works	14	28-Feb-20 A	16-Mar-20															
<b>Zone 4 R &amp; D Works</b>																			
SCR2166	Construction of U-channel and footpath at eastbound	10	07-Feb-20 A	11-Mar-20															
SCR2167	Construction of U-channel and footpath at westbound	10	24-Mar-20	03-Apr-20															
SCR2172	Carry out and complete remaining works	12	06-Apr-20	22-Apr-20															
<b>Road D4-4 (Cheung Yip Street)</b>																			
<b>CH100 to CH150 Cheung Yip Street Cul de Sac</b>																			
<b>Cheung Yip Street Cul de Sac</b>																			
SCR2670	Laying Cable and Construction for Road Lighting	18	17-Mar-20	07-Apr-20															
SCR2680	Construction of Footpath	25	20-Mar-20	22-Apr-20															
SCR2690	Construction of Street Furniture	28	21-Mar-20	27-Apr-20															
<b>Remaining Storm Drainage</b>																			
SCR2845	Diversion of watermain for construction of Storm drainage SMH4048717-M501a-M501 (waiting for WSD)	9	07-Mar-20	17-Mar-20															
SCR2855	Diversion of gas pipe for construction of Storm drainage SMH4048717-M501a-M501	45	18-Mar-20	15-May-20															
SCR2865	Construction of Storm drainage SMH4048717-M501a-M501	20	16-May-20	08-Jun-20															
SCR2875	Construction of half Storm drainage M501-SMH4048721	25	23-Nov-19 A	28-Mar-20															
SCR2895	Construction of remaining Storm drainage M501-SMH4048721	36	30-Mar-20	16-May-20															
<b>CH220 - CH420 Northbound</b>																			
<b>Road Works and Miscellaneous Works</b>																			
K-01-RWS-9442	Laying Cable and Footing Construction for Road Lighting	25	30-Mar-20	04-May-20															
K-01-RWS-9630	Construction of Footpath at northbound (CH220 - CH270)	10	17-Dec-19 A	11-Mar-20															
K-01-RWS-9631	Construction of Footpath at northbound (CH395 - CH420)	15	12-Mar-20	28-Mar-20															
<b>CH220 - CH420 Southbound</b>																			
<b>Miscellaneous Works</b>																			
K-01-RWS-9635	Construction of Footpath at southbound	15	30-Mar-20	20-Apr-20															
K-01-RWS-9636	Construction of Street Furniture	20	30-Mar-20	25-Apr-20															
<b>Section 3 of the Works- Construction of District Cooling System (Subject to Excision)</b>																			
<b>Construction of District Cooling System</b>																			
<b>Construction of DCS Works at Zone 4</b>																			
SCR2350	Submission of testing records, as-built drawings	14	19-Feb-20 A	16-Mar-20															
SCR2360	Handover inspection with EMSD	7	17-Mar-20	24-Mar-20															
SCR2370	DCS pipe connection	10	25-Mar-20	06-Apr-20															

Activity ID	Activity Name	Rem Dur	Start	Finish	February		March				April				May				line	
					56	23	01	08	15	22	29	05	12	19	26	03	10	17		24
SCR2380	Joint inspection and handover for connection to DCS Contract/EMSD	7	07-Apr-20	17-Apr-20																Joint inspection and handover for connection to DCS Contract/EMSD
<b>Section 5 of the Works-Completion of All Landscape Softworks</b>																				
<b>Hydroseeding</b>																				
K-05-HYD-1050	Hydroseeding	60	20-Mar-20	19-May-20																Hydroseeding
<b>Tree Planting</b>																				
K-05-TPG-1150	Tree Planting	60	20-Mar-20	19-May-20																Tree Planting
<b>Shrub Planting</b>																				
K-05-SPG-1200	Shrub Planting	60	20-Mar-20	19-May-20																Shrub Planting
<b>Irrigation System</b>																				
K-05-ISM-1260	Trench Excavation	3	15-Mar-19 A	17-Mar-20																Trench Excavation
K-05-ISM-1270	Engagement of License Plumbers	4	17-Mar-20	21-Mar-20																Engagement of License Plumbers
K-05-ISM-1280	Application of Temporary Water Supply with WSD	20	21-Mar-20	10-Apr-20																Application of Temporary Water Supply with WSD
K-05-ISM-1290	Insatllation of Water Meters	5	10-Apr-20	15-Apr-20																Insatllation of Water Meters
K-05-ISM-1300	Testing and commissioning of irrigation system	30	15-Apr-20	15-May-20																Testing and commissioning
<b>Section 7 of the Works-Preservation and Protection of Existing Trees</b>																				
K-07-001-1000	Section 7 of the Works-Preservation and Protection of Existing Trees	18	04-Jan-16 A	17-Mar-20																Section 7 of the Works-Preservation and Protection of Existing Trees
<b>Sections Completion Date</b>																				
K-PK-SCC-2200	Completion of Section 3-Construction of District Cooling System (DCS)	0		17-Apr-20																◆ Completion of Section 3-Construction of District Cooling System (DCS)
K-PK-SCC-2500	Completion of Section 5 -All Landscape Softworks	0		19-May-20																◆ Completion of Section 5 -All Landscape Softworks
K-PK-SCC-2700	Completion of Section 7-Preservation and Protection of Existing Trees	0		17-Mar-20																◆ Completion of Section 7-Preservation and Protection of Existing Trees

## **MATERIALAB CONSULTANTS LIMITED**

Room 723 & 725, 7/F, Block B,  
Profit Industrial Building,  
1-15 Kwai Fung Crescent, Kwai Fong,  
Hong Kong.

Tel : +852 2450 8238  
Fax : +852 2450 8032  
E-mail : mcl@fugro.com  
Website : www.fugro.com



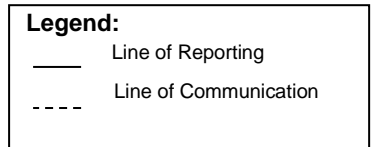
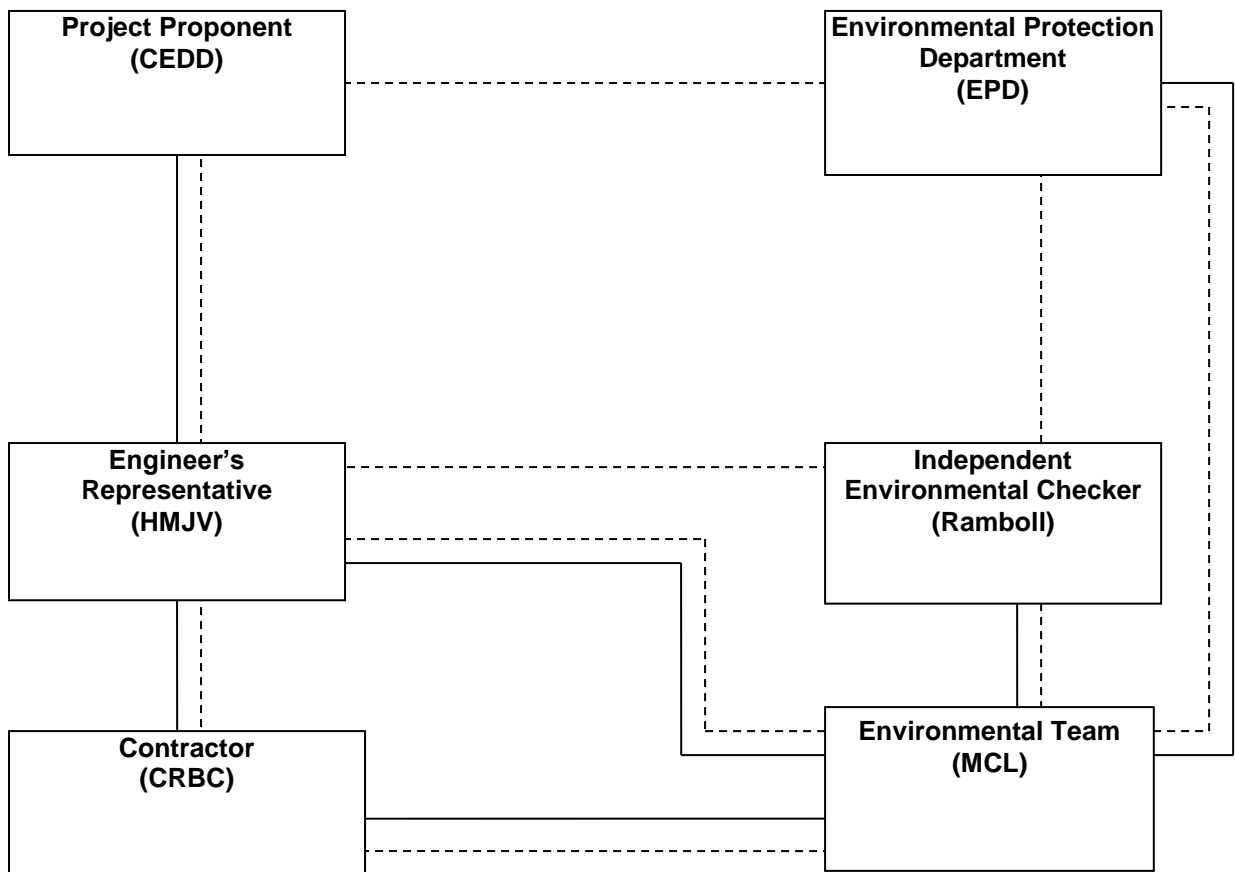
### **Appendix B**

#### **Project Organization Chart**

# MATERIALAB CONSULTANTS LIMITED

Room 723 & 725, 7/F, Block B,  
Profit Industrial Building,  
1-15 Kwai Fung Crescent, Kwai Fong,  
Hong Kong.

Tel : +852 2450 8238  
Fax : +852 2450 8032  
E-mail : mcl@fugro.com  
Website : www.fugro.com



## **MATERIALAB CONSULTANTS LIMITED**

Room 723 & 725, 7/F, Block B,  
Profit Industrial Building,  
1-15 Kwai Fung Crescent, Kwai Fong,  
Hong Kong.

Tel : +852 2450 8238  
Fax : +852 2450 8032  
E-mail : [mcl@fugro.com](mailto:mcl@fugro.com)  
Website : [www.fugro.com](http://www.fugro.com)

---



### **Appendix C**

#### **Action and Limit Levels for Air Quality and Noise**



**Action and Limit Levels for 24-hr TSP and 1-hr TSP**

Parameter	Monitoring Station	Action Level (µg/m <sup>3</sup> )	Limit Level (µg/ m <sup>3</sup> )
24-hr TSP (µg/m <sup>3</sup> )	KTD1a	177	260
	KTD2b/KTD2c	157	
	KER1b	172	
*1-hr TSP (µg/m <sup>3</sup> )	KTD1a	285	500
	KTD2b/KTD2c	279	
	KER1b	295	

Note:

1-hr TSP monitoring should be required in case of complaints.

**Action and Limit Levels for Construction Noise, Leq (30min), dB(A)**

Time Period	Location	Action	Limit
0700-1900 hrs on normal weekdays	KTD1a KTD2b/KTD2c KER1b	When one documented complaint is received	75 dB(A)

## **MATERIALAB CONSULTANTS LIMITED**

Room 723 & 725, 7/F, Block B,  
Profit Industrial Building,  
1-15 Kwai Fung Crescent, Kwai Fong,  
Hong Kong.

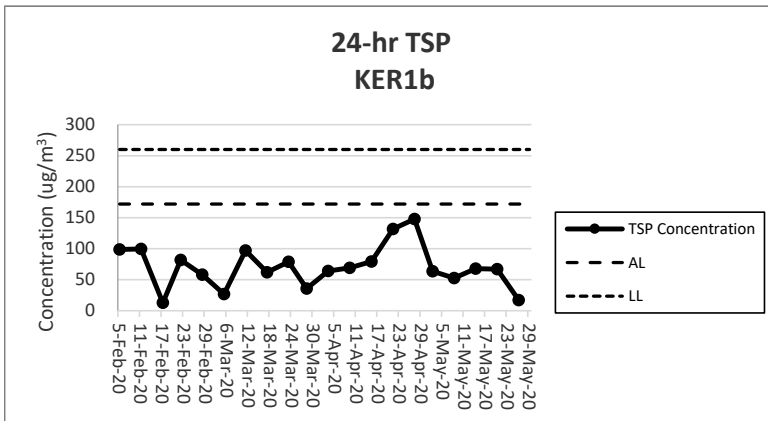
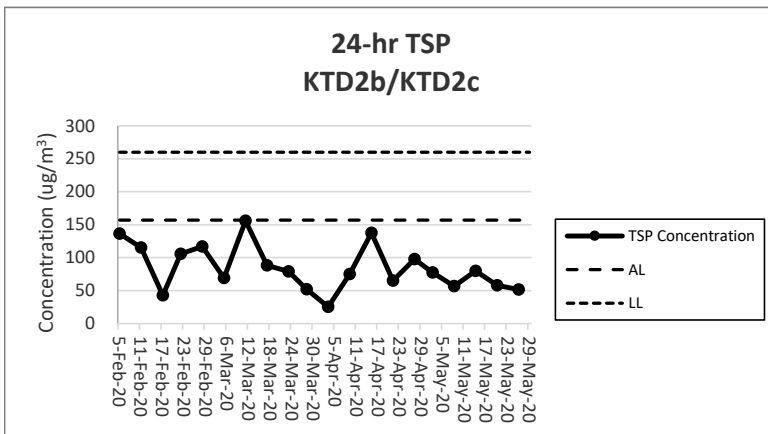
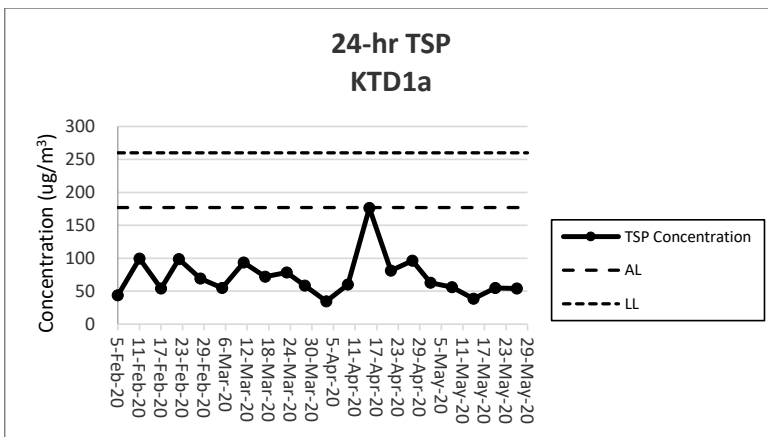
Tel : +852 2450 8238  
Fax : +852 2450 8032  
E-mail : [mcl@fugro.com](mailto:mcl@fugro.com)  
Website : [www.fugro.com](http://www.fugro.com)



### **Appendix D**

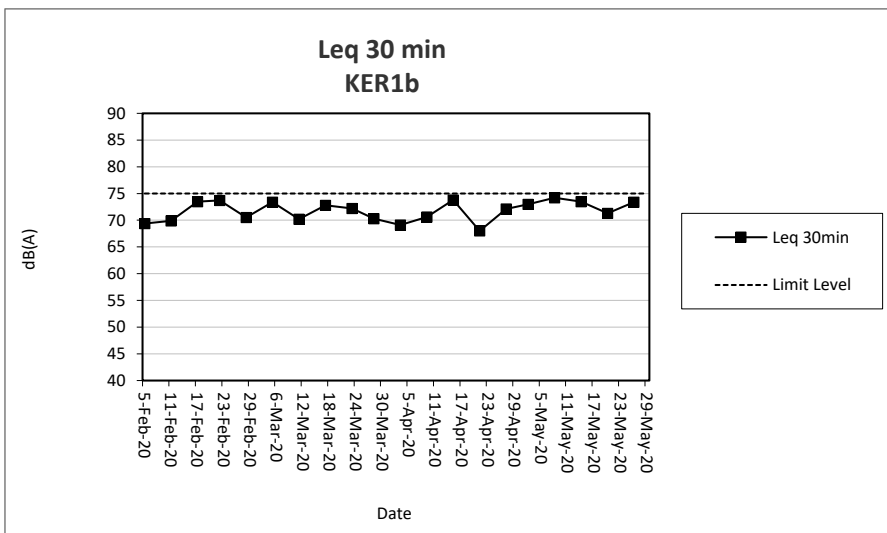
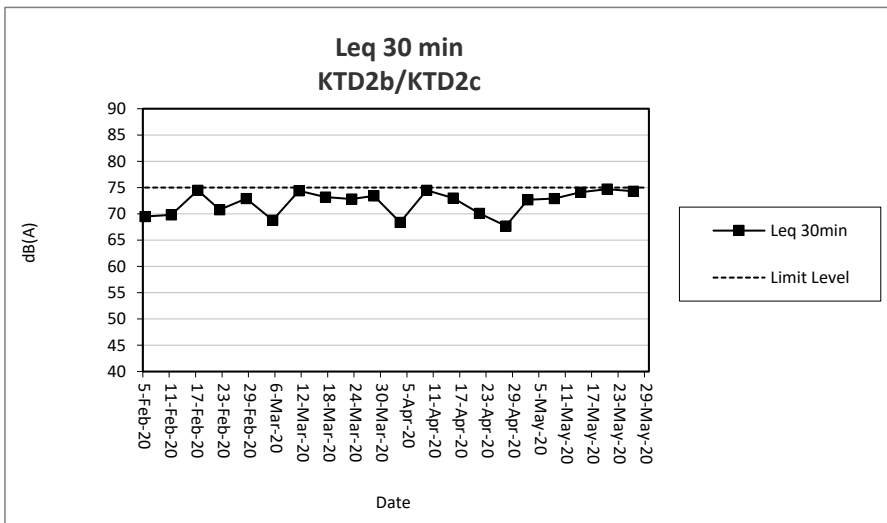
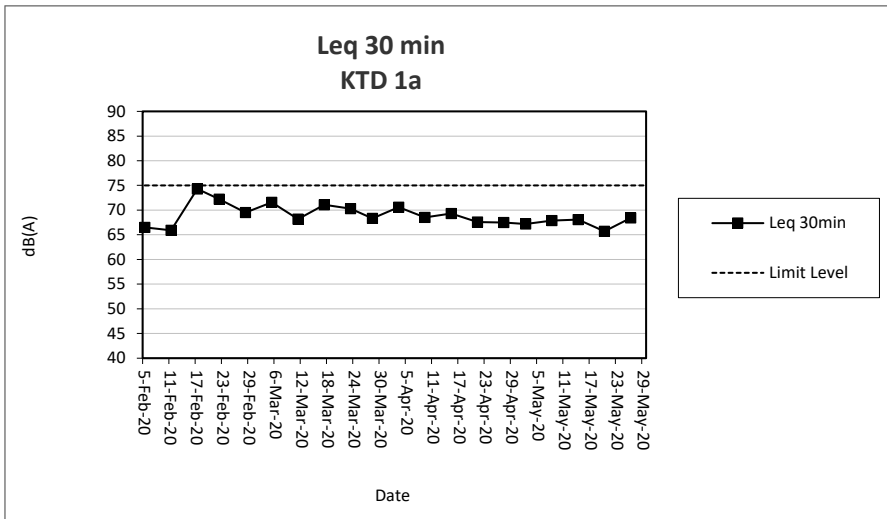
#### **Graphical Presentation of Monitoring Data**





Note:

- 1) The major activities being carried out on site during the reporting period can be referred to Section 1.3.1.
- 2) The weather conditions during monitoring in the reporting period was range from cloudy and fine.
- 3) Any other factors which might affect the monitoing results can be referred to Section 2.3.4.
- 4) KTD 2b was relocated to KTD 2c on 8 April 2020



**Note:**

- 1) The major activities being carried out on site during the reporting period can be referred to Section 1.3.1.
- 2) The weather conditions during monitoring in the reporting period was ranged from cloudy and fine.  
No raining or wind with speed over 5 m/s was observed during monitoring in the reporting period.
- 3) Any other factors which might affect the monitoring results can be referred to Section 2.3.4.
- 4) KTD 2b was relocated to KTD 2c on 8 April 2020

# MATERIALAB CONSULTANTS LIMITED

Room 723 & 725, 7/F, Block B,  
Profit Industrial Building,  
1-15 Kwai Fung Crescent, Kwai Fong,  
Hong Kong.

Tel : +852 2450 8238  
Fax : +852 2450 8032  
E-mail : [mcl@fugro.com](mailto:mcl@fugro.com)  
Website : [www.fugro.com](http://www.fugro.com)



## Appendix E

### Waste Flow Table

# MATERIALAB CONSULTANTS LIMITED

Room 723 & 725, 7/F, Block B,  
 Profit Industrial Building,  
 1-15 Kwai Fung Crescent, Kwai Fong,  
 Hong Kong.

Tel : +852 2450 8238  
 Fax : +852 2450 8032  
 E-mail : mcl@fugro.com  
 Website : www.fugro.com



Waste Flow Table for Year 2016											
Months	Actual Quantities of Inert C&D Materials Generated Monthly						Actual Quantities of Non-inert C&D Wastes Generated Monthly				
	Total Quantity Generated (Inert C&D)	Hard Rock and Large Broken Concrete	Reused in the Contract	Reused in other Projects	Disposed as Public Fill	Imported Fill	Metals	Paper/ cardboard packaging	Plastics (see Note 2)	Chemical Waste	Others, e.g. general refuse
	(in '000m <sup>3</sup> )	(in '000m <sup>3</sup> )	(in '000m <sup>3</sup> )	(in '000m <sup>3</sup> )	(in '000m <sup>3</sup> )	(in '000m <sup>3</sup> )	(in '000 kg)	(in '000kg)	(in '000kg)	(in '000kg)	(in '000m <sup>3</sup> )
2016 Jan	0.159	0.101	0.058	Nil	Nil	Nil	Nil	0.023	0.00002	0.0158	0.0335
2016 Feb	0.291	0.050	0.241	Nil	Nil	Nil	1.34	0.023	0.00002	0.0158	0.0335
2016 Mar	2.7389	0.0407	0.0662	Nil	2.632	Nil	5.92	0.023	0.00002	0.0158	0.0571
2016 Apr	4.1718	0.0578	0.462	Nil	3.652	Nil	12.5	0.023	0.00002	0.0158	0.0426
2016 May	3.592	Nil	0.299	Nil	3.293	Nil	5.23	0.023	0.00002	0.0158	0.0621
2016 June	4.6035	Nil	0.8555	Nil	3.748	Nil	Nil	0.023	0.00002	0.0158	0.0619
2016 July	6.155	0.153	0.015	Nil	5.987	Nil	7.84	0.023	0.00002	0.0158	0.0433
2016 Aug	5.1155	Nil	Nil	Nil	5.1155	Nil	19.93	0.023	Nil	Nil	0.0147
2016 Sept	7.2267	Nil	Nil	Nil	7.2267	Nil	33.65	0.023	Nil	Nil	0.0103
2016 Oct	4.6448	Nil	Nil	Nil	4.6448	Nil	13.30	0.023	Nil	Nil	0.0385
2016 Nov	6.1626	Nil	Nil	Nil	6.1626	Nil	27.06	0.023	Nil	Nil	0.0192
2016 Dec	6.3522	Nil	Nil	Nil	6.3522	Nil	13.30	0.023	Nil	Nil	0.0121
<b>Total</b>	<b>51.213</b>	<b>0.4025</b>	<b>1.9967</b>	<b>Nil</b>	<b>48.8138</b>	<b>Nil</b>	<b>140.07</b>	<b>0.276</b>	<b>0.00014</b>	<b>0.1106</b>	<b>0.4288</b>

Note:

- 1) The waste flow table shall also include C&D materials that are specified in the Contract to be imported for use at the Site.
- 2) Plastics refer to plastic bottles/containers, plastic sheets/foam from packaging materials.

# MATERIALAB CONSULTANTS LIMITED

Room 723 & 725, 7/F, Block B, Profit Industrial Building,  
1-15 Kwai Fung Crescent, Kwai Fong, Hong Kong.

Tel : +852 2450 8238  
Fax : +852 2450 8032  
E-mail : mcl@fugro.com  
Website : www.fugro.com



Waste Flow Table for Year 2017											
Months	Actual Quantities of Inert C&D Materials Generated Monthly						Actual Quantities of Non-inert C&D Wastes Generated Monthly				
	Total Quantity Generated (Inert C&D)	Hard Rock and Large Broken Concrete	Reused in the Contract	Reused in other Projects	Disposed as Public Fill	Imported Fill	Metals	Paper/ cardboard packaging	Plastics (see Note 2)	Chemical Waste	Others, e.g. general refuse
	(in '000m <sup>3</sup> )	(in '000m <sup>3</sup> )	(in '000m <sup>3</sup> )	(in '000m <sup>3</sup> )	(in '000m <sup>3</sup> )	(in '000m <sup>3</sup> )	(in '000 kg)	(in '000kg)	(in '000kg)	(in '000kg)	(in '000m <sup>3</sup> )
2017 Jan	4.2300	Nil	Nil	Nil	4.2300	Nil	0.015	0.023	Nil	Nil	0.0109
2017 Feb	3.2128	Nil	Nil	Nil	3.2128	Nil	0.015	0.023	Nil	Nil	0.0096
2017 Mar	9.4759	Nil	Nil	Nil	9.4759	Nil	0.034	0.023	Nil	Nil	0.0162
2017 Apr	4.8827	Nil	Nil	Nil	4.8827	Nil	0.016	0.023	Nil	Nil	0.0062
2017 May	3.0366	Nil	Nil	Nil	3.0366	Nil	0.022	0.023	Nil	Nil	0.0282
2017 Jun	2.5656	Nil	Nil	Nil	2.5656	Nil	41.25	Nil	Nil	Nil	0.0357
2017 Jul	5.5267	Nil	0.7851	Nil	4.7416	Nil	4.01	0.4515	Nil	0.25	0.0364
2017 Aug	11.4734	Nil	0.0276	Nil	11.4458	Nil	7.4	Nil	Nil	Nil	0.0196
2017 Sep	23.9373	Nil	2.6167	Nil	21.3206	Nil	3.52	Nil	Nil	Nil	0.0333
2017 Oct	17.8261	Nil	0.4069	Nil	17.4192	Nil	Nil	Nil	Nil	Nil	0.0156
2017 Nov	5.8834	Nil	0.6664	Nil	5.217	Nil	Nil	Nil	Nil	Nil	0.023
2017 Dec	21.3554	Nil	0.4763	Nil	20.8791	Nil	29.13	Nil	Nil	Nil	0.022
<b>Total</b>	<b>113.4059</b>	<b>Nil</b>	<b>4.9790</b>	<b>Nil</b>	<b>108.4269</b>	<b>Nil</b>	<b>85.412</b>	<b>0.5665</b>	<b>Nil</b>	<b>0.25</b>	<b>0.2567</b>

Note:

- 1) The waste flow table shall also include C&D materials that are specified in the Contract to be imported for use at the Site.
- 2) Plastics refer to plastic bottles/containers, plastic sheets/foam from packaging materials.

# MATERIALAB CONSULTANTS LIMITED

Room 723 & 725, 7/F, Block B,  
 Profit Industrial Building,  
 1-15 Kwai Fung Crescent, Kwai Fong,  
 Hong Kong.

Tel : +852 2450 8238  
 Fax : +852 2450 8032  
 E-mail : mcl@fugro.com  
 Website : www.fugro.com



Waste Flow Table for Year 2018											
Months	Actual Quantities of Inert C&D Materials Generated Monthly						Actual Quantities of Non-inert C&D Wastes Generated Monthly				
	Total Quantity Generated (Inert C&D)	Hard Rock and Large Broken Concrete	Reused in the Contract	Reused in other Projects	Disposed as Public Fill	Imported Fill	Metals	Paper/ cardboard packaging	Plastics (see Note 2)	Chemical Waste	Others, e.g. general refuse
	(in '000m <sup>3</sup> )	(in '000m <sup>3</sup> )	(in '000m <sup>3</sup> )	(in '000m <sup>3</sup> )	(in '000m <sup>3</sup> )	(in '000m <sup>3</sup> )	(in '000 kg)	(in '000kg)	(in '000kg)	(in '000kg)	(in '000m <sup>3</sup> )
2018 Jan	10.2340	Nil	Nil	Nil	10.2340	Nil	32.39	Nil	Nil	Nil	0.0161
2018 Feb	6.5256	Nil	Nil	Nil	6.5256	Nil	Nil	Nil	Nil	Nil	0.0235
2018 Mar	28.1995	Nil	Nil	Nil	28.1995	Nil	54.54	Nil	Nil	Nil	0.0190
2018 Apr	11.2165	Nil	Nil	Nil	11.2165	Nil	Nil	Nil	Nil	Nil	0.0270
2018 May	5.6011	Nil	Nil	Nil	5.6011	Nil	Nil	Nil	Nil	Nil	0.0140
2018 Jun	5.8072	Nil	Nil	Nil	5.8072	Nil	93.3	Nil	Nil	Nil	0.0235
2018 Jul	7.4206	Nil	Nil	Nil	7.4206	Nil	Nil	Nil	Nil	Nil	0.0383
2018 Aug	2.0815	Nil	Nil	Nil	2.0815	Nil	Nil	Nil	Nil	Nil	0.0665
2018 Sep	0.3710	Nil	Nil	Nil	0.3710	Nil	Nil	Nil	Nil	Nil	0.0436
2018 Oct	0.9087	Nil	Nil	Nil	0.9620	0.0533	Nil	Nil	Nil	Nil	0.0444
2018 Nov	0.7291	Nil	Nil	Nil	0.7733	0.0589	Nil	Nil	Nil	Nil	0.0225
2018 Dec	-0.0931	Nil	Nil	Nil	0.3860	0.4791	Nil	Nil	Nil	Nil	0.0228
<b>Total</b>	<b>79.0017</b>	<b>Nil</b>	<b>Nil</b>	<b>Nil</b>	<b>79.5783</b>	<b>0.5913</b>	<b>180.23</b>	<b>Nil</b>	<b>Nil</b>	<b>Nil</b>	<b>0.3614</b>

Note:

- 1) The waste flow table shall also include C&D materials that are specified in the Contract to be imported for use at the Site.
- 2) Plastics refer to plastic bottles/containers, plastic sheets/foam from packaging materials.

# MATERIALAB CONSULTANTS LIMITED

Room 723 & 725, 7/F, Block B, Profit Industrial Building,  
1-15 Kwai Fung Crescent, Kwai Fong, Hong Kong.

Tel : +852 2450 8238  
Fax : +852 2450 8032  
E-mail : mcl@fugro.com  
Website : www.fugro.com



Waste Flow Table for Year 2019											
Monthly Ending	Actual Quantities of Inert C&D Materials Generated Monthly						Actual Quantities of Non-inert C&D Wastes Generated Monthly				
	Total Quantity Generated (Inert C&D)	Hard Rock and Large Broken Concrete	Reused in the Contract	Reused in other Projects	Disposed as Public Fill	Imported Fill	Metals	Paper/ cardboard packaging	Plastics (see Note 2)	Chemical Waste	Others, e.g. general refuse
	(in '000m <sup>3</sup> )	(in '000m <sup>3</sup> )	(in '000m <sup>3</sup> )	(in '000m <sup>3</sup> )	(in '000m <sup>3</sup> )	(in '000m <sup>3</sup> )	(in '000 kg)	(in '000kg)	(in '000kg)	(in '000kg)	(in '000m <sup>3</sup> )
2019 Jan	0.2485	Nil	Nil	Nil	0.7063	0.45774	Nil	Nil	Nil	Nil	0.0100
2019 Feb	0.2790	Nil	Nil	Nil	0.2790	Nil	Nil	Nil	Nil	Nil	0.0076
2019 Mar	0.7376	Nil	Nil	Nil	0.7376	Nil	Nil	Nil	Nil	Nil	0.0929
2019 Apr	0.3694	Nil	Nil	Nil	0.3694	Nil	Nil	Nil	Nil	Nil	0.0365
2019 May	0.4683	Nil	Nil	Nil	0.4683	Nil	Nil	Nil	Nil	Nil	0.0383
2019 Jun	0.8571	Nil	Nil	Nil	0.8571	Nil	Nil	Nil	Nil	Nil	0.0160
2019 Jul	15.2091	Nil	Nil	Nil	15.2091	Nil	Nil	Nil	Nil	Nil	0.0331
2019 Aug	5.7307	Nil	Nil	Nil	5.7307	Nil	Nil	Nil	Nil	Nil	0.0249
2019 Sep	9.0074	Nil	Nil	Nil	9.0074	Nil	Nil	Nil	Nil	Nil	0.0541
2019 Oct	0.6616	Nil	Nil	Nil	0.6616	Nil	Nil	Nil	Nil	Nil	0.0269
2019 Nov	0.8783	Nil	Nil	Nil	0.8783	Nil	Nil	0.17	Nil	Nil	0.0453
2019 Dec	0.6110	Nil	Nil	Nil	0.6110	Nil	Nil	Nil	Nil	Nil	0.0519
<b>Total</b>	<b>35.058</b>	<b>0</b>	<b>0</b>	<b>0</b>	<b>35.5158</b>	<b>0.4577</b>	<b>0</b>	<b>0.17</b>	<b>0</b>	<b>0</b>	<b>0.4375</b>

Note:

- 1) The waste flow table shall also include C&D materials that are specified in the Contract to be imported for use at the Site.
- 2) Plastics refer to plastic bottles/containers, plastic sheets/foam from packaging materials.

# MATERIALAB CONSULTANTS LIMITED

Room 723 & 725, 7/F, Block B, Profit Industrial Building,  
1-15 Kwai Fung Crescent, Kwai Fong, Hong Kong.  
Tel : +852 2450 8238  
Fax : +852 2450 8032  
E-mail : mcl@fugro.com  
Website : www.fugro.com



Waste Flow Table for Year 2020											
Monthly Ending	Actual Quantities of Inert C&D Materials Generated Monthly						Actual Quantities of Non-inert C&D Wastes Generated Monthly				
	Total Quantity Generated (Inert C&D)	Hard Rock and Large Broken Concrete	Reused in the Contract	Reused in other Projects	Disposed as Public Fill	Imported Fill	Metals	Paper/ cardboard packaging	Plastics (see Note 2)	Chemical Waste	Others, e.g. general refuse
	(in '000m <sup>3</sup> )	(in '000m <sup>3</sup> )	(in '000m <sup>3</sup> )	(in '000m <sup>3</sup> )	(in '000m <sup>3</sup> )	(in '000m <sup>3</sup> )	(in '000 kg)	(in '000kg)	(in '000kg)	(in '000kg)	(in '000m <sup>3</sup> )
2020 Jan	0.3807	Nil	Nil	Nil	0.3807	Nil	Nil	Nil	Nil	Nil	0.0276
2020 Feb	0.2862	Nil	Nil	Nil	0.2862	Nil	Nil	Nil	Nil	Nil	0.0365
2020 Mar	0.4291	Nil	Nil	Nil	0.4291	Nil	Nil	Nil	Nil	Nil	0.0270
2020 Apr	0.1812	Nil	Nil	Nil	0.1812	Nil	Nil	Nil	Nil	Nil	0.0201
2020 May	0.2966	Nil	Nil	Nil	0.2966	Nil	Nil	Nil	Nil	Nil	0.0168
2020 Jun											
2020 Jul											
2020 Aug											
2020 Sep											
2020 Oct											
2020 Nov											
2020 Dec											
<b>Total</b>	<b>1.5738</b>	<b>0</b>	<b>0</b>	<b>0</b>	<b>1.5738</b>	<b>0</b>	<b>0</b>	<b>0</b>	<b>0</b>	<b>0</b>	<b>0.1280</b>

Note:

- 1) The waste flow table shall also include C&D materials that are specified in the Contract to be imported for use at the Site.
- 2) Plastics refer to plastic bottles/containers, plastic sheets/foam from packaging materials.



## **MATERIALAB CONSULTANTS LIMITED**

Room 723 & 725, 7/F, Block B,  
Profit Industrial Building,  
1-15 Kwai Fung Crescent, Kwai Fong,  
Hong Kong.

Tel : +852 2450 8238  
Fax : +852 2450 8032  
E-mail : [mcl@fugro.com](mailto:mcl@fugro.com)  
Website : [www.fugro.com](http://www.fugro.com)



### **Appendix F**

#### **Environmental Mitigation Implementation Schedule (EMIS)**

# MATERIALAB CONSULTANTS LIMITED

Room 723 & 725, 7/F, Block B,  
Profit Industrial Building,  
1-15 Kwai Fung Crescent, Kwai Fong,  
Hong Kong.

Tel : +852 2450 8238  
Fax : +852 2450 8032  
E-mail : mcl@fugro.com  
Website : www.fugro.com



EIA Ref	EM&A Ref	Environmental Protection Measures / Mitigation Measures	Who to implement the measure	Location / Timing	Construction Phase Implementation Status
<u>Air Quality Measures</u>					
<u>New Distributor Roads Serving the Planned KTD</u>					
AEIAR-130/2009 S3.2	AEIAR 130/2009 EM&A Manual S2.2	8 times daily watering of the work site with active dust emitting activities.	Contractor	All relevant worksites	Implemented
<u>Decommissioning of the Radar Station of the former Kai Tak Airport</u>					
AEIAR-130/2009 S5.2.19	AEIAR 130/2009 EM&A Manual S4.2.4	The excavation area should be limited to as small in size as possible and backfilled with clean and/or treated soil shortly after excavation work.  The exposed excavated area should be covered by the tarpaulin during night time.  The top layer soils should be sprayed with fine misting of water immediately before the excavation.	Contractor	All relevant worksites	Not Applicable
<u>Trunk Road T2</u>					
AEIAR-174/2013 S4.9.2.1	AEIAR-174/2013 EM&A Manual S2.3.1.1	Watering of the construction areas 12 times per day to reduce dust emissions by 91.7%, with reference to the "Control of Open Fugitive Dust Sources" (USEPA AP-42). The amount of water to be applied would be 0.91L/m <sup>2</sup> for the respective watering frequency.	Contractor	All relevant worksites	Implemented
		Dust enclosures with watering would be provided along the loading ramps and conveyor belts for unloading the C&D materials to the barge for dust suppression.	Contractor	All relevant worksites	Not Applicable
		8 km per hour is the recommended limit of the speed for vehicles on unpaved site roads.	Contractor	All relevant worksites	Implemented
<u>Good Site Practices</u>					
AEIAR-130/2009 S3.2, S5.2.19, AEIAR-174/2013 S4.9.2.2	AEIAR 130/2009 EM&A Manual S2.2, S4.2, AEIAR 174/2013 EM&A Manual S2.3.1.2	Stockpiling site(s) should be lined with impermeable sheeting and banded. Stockpiles should be fully covered by impermeable sheeting to reduce dust emission.	Contractor	All relevant worksites	Implemented
		Use of regular watering to reduce dust emissions from exposed site surfaces and unpaved roads, particularly during dry weather. Use of frequent watering for particularly dusty construction areas and areas close to ASRs.	Contractor	All relevant worksites	Implemented
		Misting for the dusty material should be carried out before being loaded into the vehicle. Any vehicle with an open load carrying area should have properly fitted side and tail boards.	Contractor	All relevant worksites	Implemented
		Material having the potential to create dust should not be loaded from a level higher than the side and tail boards and should be dampened and covered by a clean tarpaulin.	Contractor	All relevant worksites	Implemented

The copyright of this document is owned by MaterialLab Consultants Ltd. It may not be reproduced except with prior written approval from the Company.

# MATERIALAB CONSULTANTS LIMITED

Room 723 & 725, 7/F, Block B,  
Profit Industrial Building,  
1-15 Kwai Fung Crescent, Kwai Fong,  
Hong Kong.

Tel : +852 2450 8238  
Fax : +852 2450 8032  
E-mail : mcl@fugro.com  
Website : www.fugro.com



EIA Ref	EM&A Ref	Environmental Protection Measures / Mitigation Measures	Who to implement the measure	Location / Timing	Construction Phase Implementation Status
		Tarpaulin covering of all dusty vehicle loads transported to, from and between site locations; The tarpaulin should be properly secured and should extent at least 300 mm over the edges of the sides and tailboards. The material should also be dampened if necessary before transportation.	Contractor	All relevant worksites	Implemented
		The vehicles should be restricted to maximum speed of 10 km per hour. Confined haulage and delivery vehicle to designated roadways insider the site. Onsite unpaved roads should be compacted and kept free of lose materials.	Contractor	All relevant worksites	Implemented
		Vehicle washing facilities should be provided at every vehicle exit point. Every vehicle should be washed to remove any dusty materials from its body and wheels before leaving the construction sites.  The area where vehicle washing takes place and the section of the road between the washing facilities and the exit point should be paved with concrete, bituminous materials or hardcores.	Contractor	All relevant worksites	Implemented
		Every main haul road should be scaled with concrete and kept clear of dusty materials or sprayed with water so as to maintain the entire road surface wet.	Contractor	All relevant worksites	Implemented
		Every stock of more than 20 bags of cement or dry pulverised fuel ash (PFA) should be covered entirely by impervious sheeting or placed in an area sheltered on the top and the 3 sides.	Contractor	All relevant worksites	Implemented
		Cement or dry PFA delivered in bulk should be stored in a closed silo fitted with an audible high level alarm which is interlocked with the material filling line and no overfilling is allowed.	Contractor	All relevant worksites	Not Applicable
		Loading, unloading, transfer, handling or storage of bulk cement or dry PFA should be carried out in a totally enclosed system or facility, and any vent or exhaust should be fitted with an effective fabric filter or equivalent air pollution control system.	Contractor	All relevant worksites	Implemented
		Side enclosure and covering of any aggregate or dusty material storage piles to reduce emissions. Where this is not practicable owing to frequent usage, watering shall be applied to aggregate fines.	Contractor	All relevant worksites	Implemented
		Open stockpiles shall be avoided or covered. Prevent placing dusty material storage piles near ASRs.	Contractor	All relevant worksites	Implemented
		Routing of vehicles and position of construction plant should be at the maximum possible distance from ASRs.	Contractor	All relevant worksites	Implemented
		<u>Dark smoke</u>			

# MATERIALAB CONSULTANTS LIMITED

Room 723 & 725, 7/F, Block B,  
Profit Industrial Building,  
1-15 Kwai Fung Crescent, Kwai Fong,  
Hong Kong.

Tel : +852 2450 8238  
Fax : +852 2450 8032  
E-mail : mcl@fugro.com  
Website : www.fugro.com



EIA Ref	EM&A Ref	Environmental Protection Measures / Mitigation Measures	Who to implement the measure	Location / Timing	Construction Phase Implementation Status
		Dark smoke emission shall be control in accordance with the Air Pollution Control (Smoke) Regulation and ETWB TCW 19/2005.	Contractor	All relevant worksites	Implemented
		Plant and equipment should be well maintained to prevent dark smoke emission.	Contractor	All relevant worksites	Implemented
<u>Noise Measures</u>					
Trunk Road T2					
AEIAR-174/2013 S5.9.2.1	AEIAR-174/2013 EM&A Manual S3.4.1.1	The use of quieter plant, including Quality Powered Mechanical Equipment (QPME) is specified for the list of equipment: • Concrete lorry mixer • Dump Truck, 5.5 tonne < gross vehicle weight <= 38 tonne • Generator, Super Silenced, 70 dB(A) at 7m • Poker, vibratory, Hand-held (electric) • Water Pump, Submersible (Electric) • Mobile Crane - KOBELCO CKS900 • Excavator, wheeled/tracked - HYUNDAI R80CR-9	Contractor	All relevant worksites	Implemented
		Use of temporary or fixed noise barriers with a surface density of at least 10kg/m <sup>2</sup> to screen noise from movable and stationary plant.	Contractor	All relevant worksites	Not Applicable
		Use of enclosures with covers at top and three sides and a surface density of at least 10kg/m <sup>2</sup> to screen noise from generally static noisy plant such as air compressors.	Contractor	All relevant worksites	Not Applicable
		Use of acoustic fabric for the silent piling system, drill rigs, rock drills etc.	Contractor	All relevant worksites	Implemented
<u>Good Site Practices</u>					
AEIAR-130/2009 S3.3, S5.3.10, AEIAR-174/2013 S5.9.2.1	AEIAR 130/2009 EM&A Manual S2.3, S4.3.2, AEIAR-174/2013 EM&A Manual S3.4.1.1	Only well-maintained plant should be operated on-site and plant shall be serviced regularly during the construction/ decommissioning program.	Contractor	All relevant worksites	Implemented
		Silencers or mufflers on construction equipment should be utilized and shall be properly maintained during the construction/ decommissioning program.	Contractor	All relevant worksites	Implemented
		Mobile plant, if any, should be sited as far away from NSRs as possible.	Contractor	All relevant worksites	Implemented
		Machines and plant (such as trucks) that may be in intermittent use shall be shut down between works periods or should be throttled down to a minimum.	Contractor	All relevant worksites	Implemented
		Plant known to emit noise strongly in one direction shall, wherever possible, be orientated so that the noise is directed away from the nearby NSRs.	Contractor	All relevant worksites	Implemented

The copyright of this document is owned by MaterialLab Consultants Ltd. It may not be reproduced except with prior written approval from the Company.

# MATERIALAB CONSULTANTS LIMITED

Room 723 & 725, 7/F, Block B,  
Profit Industrial Building,  
1-15 Kwai Fung Crescent, Kwai Fong,  
Hong Kong.

Tel : +852 2450 8238  
Fax : +852 2450 8032  
E-mail : mcl@fugro.com  
Website : www.fugro.com



EIA Ref	EM&A Ref	Environmental Protection Measures / Mitigation Measures	Who to implement the measure	Location / Timing	Construction Phase Implementation Status
		Material stockpiles and other structures should be effectively utilized, wherever practicable, in screening noise from on-site construction/ decommissioning activities.	Contractor	All relevant worksites	Implemented
		Use of site hoarding as a noise barrier to screen noise at low level NSRs.	Contractor	All relevant worksites	Implemented
		For the use of hand held percussive breakers (with mass of above 10kg) and portable air compressors (supply air at 500 kPa or above), the noise level of such PME shall comply with a stringent noise emission standard and a noise emission label shall be obtained from the DEP before use at any time in construction site.	Contractor	All relevant worksites	Implemented
		Quiet powered mechanical equipment (PME) shall be used for the construction of the Project.	Contractor	All relevant worksites	Implemented
		Full enclosures shall be used to screen noise from relatively static PMEs (including air compressor, bar bender, concrete pump, generator and water pump) from sensitive receiver(s).	Contractor	All relevant worksites	Not Applicable
		Movable cantilevered noise barriers shall be used to screen noise from mobile PMEs (including asphalt paver, breaker, excavator and hand-held breaker) from sensitive receiver(s). These movable cantilevered noise barriers shall be located close to the mobile PMEs and shall be moved/adjusted iteratively in step with each movement of the corresponding mobile PMEs in order to maximize their noise reduction effects.	Contractor	All relevant worksites	Not Applicable
		Only approved or exempted Non-road Mobile Machineries (NRMMS) including regulated machines and non-road vehicles with proper labels are allowed to be used in specified activities on-site.	Contractor	All relevant worksites	Implemented
<b>Water Quality Measures</b>					
<b>Trunk Road T2</b>					
		<u>Accidental Spillage</u>			
AEIAR-174/2013 S6.4.8.5	AEIAR-174/2013 EM&A Manual S4.2.1.1	All bentonite slurry should be stored in a container that resistant to corrosion, maintained in good conditions and securely closed; The container should be labelled in English and Chinese and note that the container is for storage of bentonite slurry only.	Contractor	All relevant worksites	Implemented
		The storage container should be placed on an area of impermeable flooring and bunded with capacity to accommodate 110% of the volume of the container size or 20% by volume stored in the area and enclosed with at least 3 sides.	Contractor	All relevant worksites	Implemented
		The storage container should be sufficiently covered to prevent rainfall entering the container or bunded area (water collected within the bund must be tested and disposed of as chemical	Contractor	All relevant worksites	Implemented

# MATERIALAB CONSULTANTS LIMITED

Room 723 & 725, 7/F, Block B,  
Profit Industrial Building,  
1-15 Kwai Fung Crescent, Kwai Fong,  
Hong Kong.

Tel : +852 2450 8238  
Fax : +852 2450 8032  
E-mail : mcl@fugro.com  
Website : www.fugro.com



EIA Ref	EM&A Ref	Environmental Protection Measures / Mitigation Measures	Who to implement the measure	Location / Timing	Construction Phase Implementation Status
		waste, if necessary). An emergency clean up kit shall be readily available where bentonite fluid will be stored or used.			
		The handling and disposal of bentonite slurries should be undertaken in accordance within ProPECC PN 1/94. Surplus bentonite slurries used in construction works shall be reconditioned and reused wherever practicable. Residual bentonite slurry shall be disposed of from the site as soon as possible as stipulated in Clause 8.56 of the General Specification for Civil Engineering Works. The Contractor should explore alternative disposal outlets for the residual bentonite slurry (dewatered bentonite slurry to be disposed to a public filling area and liquid bentonite slurry, if mixed with inert fill material, to be disposed to a public filling area) and disposal at landfill should be the last resort.	Contractor	All relevant worksites	Implemented
AEIAR-174/2013 S6.4.8.8	AEIAR-174/2013 EM&A Manual S4.2.1.1	In order to protect against impacts to the surrounding marine waters of the KTTS and Victoria Harbour in the event of an accidental spillage of fuel or oil, the Contractor will be required to prepare a spill response plan to the satisfaction of AFCD, EPD, FSD, Police, TD and WSD to define procedures for the control, containment and clean-up of any spillage that could occur on the construction site.	Contractor	All relevant worksites	Implemented
		<u>Dredging, Reclamation and Filling</u>			
		No dredging, reclamation or filling in the marine environment shall be carried out.	Contractor	All relevant worksites	Implemented
<b>Decommissioning of the Radar Station of the former Kai Tak Airport</b>					
		<u>Building Demolition</u>			
AEIAR-130/2009 S5.4	AEIAR 130/2009 EM&A Manual S4.4	The site practices outlined in ProPECC PN 1/94 "Construction Site Drainage" should be followed as far as practicable in order to minimise surface runoff and the chance of erosion.	Contractor	All relevant worksites	Not Applicable
		There is a need to apply to EPD for a discharge licence under the WPCO for discharging effluent from the construction site. The discharge quality is required to meet the requirements specified in the discharge licence. All the runoff, wastewater or extracted groundwater generated from the works areas should be treated so that it satisfies all the standards listed in the TM-DSS. It is anticipated that the wastewater generated from the works areas would be of small quantity. Monitoring of the treated effluent quality from the works areas should be carried out in accordance with the WPCO license which is under the ambit of regional office (RO) of EPD.	Contractor	All relevant worksites	Not Applicable
		<u>General Construction Works</u>			
		<u>Construction Runoff</u>			

The copyright of this document is owned by MaterialLab Consultants Ltd. It may not be reproduced except with prior written approval from the Company.

# MATERIALAB CONSULTANTS LIMITED

Room 723 & 725, 7/F, Block B,  
Profit Industrial Building,  
1-15 Kwai Fung Crescent, Kwai Fong,  
Hong Kong.

Tel : +852 2450 8238  
Fax : +852 2450 8032  
E-mail : mcl@fugro.com  
Website : www.fugro.com



EIA Ref	EM&A Ref	Environmental Protection Measures / Mitigation Measures	Who to implement the measure	Location / Timing	Construction Phase Implementation Status
AEIAR-130/2009 S3.4, S5.4/ AEIAR-174/2013 S6.4.8.1	AEIAR 130/2009 EM&A Manual S2.4, S4.4/ AEIAR-174/2013 EM&A Manual S4.2.1.1	Exposed soil areas should be minimised to reduce the potential for increased siltation, contamination of runoff, and erosion. Construction runoff related impacts associated with the above ground construction activities can be readily controlled through the use of appropriate mitigation measures which include the use of sediment traps and adequate maintenance of drainage systems to prevent flooding and overflow.	Contractor	All relevant worksites	Implemented
		Construction site should be provided with adequately designed perimeter channel and pre-treatment facilities and proper maintenance. The boundaries of critical areas of earthworks should be marked and surrounded by dykes or embankments for flood protection. Temporary ditches should be provided to facilitate runoff discharge into the appropriate watercourses, via a silt retention pond. Permanent drainage channels should incorporate sediment basins or traps and baffles to enhance deposition rates. The design of efficient silt removal facilities should be based on the guidelines in Appendix A1 of ProPECC PN 1/94.	Contractor	All relevant worksites	Implemented
		Ideally, construction works should be programmed to minimise surface excavation works during the rainy season (April to September). All exposed earth areas should be completed as soon as possible after earthworks have been completed, or alternatively, within 14 days of the cessation of earthworks where practicable. If excavation of soil cannot be avoided during the rainy season, or at any time of year when rainstorms are likely, exposed slope surfaces should be covered by tarpaulin or other means.	Contractor	All relevant worksites	Implemented
		Sediment tanks of sufficient capacity, constructed from pre-formed individual cells of approximately 6 to 8 m <sup>3</sup> capacity, are recommended as a general mitigation measure which can be used for settling surface runoff prior to disposal. The system capacity is flexible and able to handle multiple inputs from a variety of sources and particularly suited to applications where the influent is pumped.	Contractor	All relevant worksites	Implemented
		Open stockpiles of construction materials (for examples, aggregates, sand and fill material) of more than 50 m <sup>3</sup> should be covered with tarpaulin or similar fabric during rainstorms. Measures should be taken to prevent the washing away of construction materials, soil, silt or debris into any drainage system.	Contractor	All relevant worksites	Implemented
		Manholes (including newly constructed ones) should always be adequately covered and temporarily sealed so as to prevent silt, construction materials or debris being washed into the drainage system and storm runoff being directed into foul sewers.	Contractor	All relevant worksites	Implemented
		Precautions to be taken at any time of year when rainstorms are likely, actions to be taken when a rainstorm is imminent or forecast, and actions to be taken during or after rainstorms are	Contractor	All relevant worksites	Implemented

The copyright of this document is owned by MaterialLab Consultants Ltd. It may not be reproduced except with prior written approval from the Company.

# MATERIALAB CONSULTANTS LIMITED

Room 723 & 725, 7/F, Block B,  
Profit Industrial Building,  
1-15 Kwai Fung Crescent, Kwai Fong,  
Hong Kong.

Tel : +852 2450 8238  
Fax : +852 2450 8032  
E-mail : mcl@fugro.com  
Website : www.fugro.com



EIA Ref	EM&A Ref	Environmental Protection Measures / Mitigation Measures	Who to implement the measure	Location / Timing	Construction Phase Implementation Status
		summarised in Appendix A2 of ProPECC PN 1/94. Particular attention should be paid to the control of silty surface runoff during storm events.			
		Oil interceptors should be provided in the drainage system and regularly cleaned to prevent the release of oils and grease into the storm water drainage system after accidental spillages. The interceptor should have a bypass to prevent flushing during periods of heavy rain.	Contractor	All relevant worksites	Implemented
		An adequately designed and located wheel washing bay should be provided at every site exit, and wash-water should have sand and silt settled out and removed at least on a weekly basis to ensure the continued efficiency of the process. The section of access road leading to, and exiting from, the wheel-wash bay to the public road should be paved with sufficient backfall toward the wheel-wash bay to prevent vehicle tracking of soil and silty water to public roads and drains.	Contractor	All relevant worksites	Implemented
		<u>Drainage</u>			
		It is recommended that on-site drainage system should be installed prior to the commencement of other construction activities. Sediment traps should be installed in order to minimise the sediment loading of the effluent prior to discharge into foul sewers. There should be no direct discharge of effluent from the site into the sea.	Contractor	All relevant worksites	Implemented
		All temporary and permanent drainage pipes and culverts provided to facilitate runoff discharge should be adequately designed for the controlled release of storm flows. All sediment control measures should be regularly inspected and maintained to ensure proper and efficient operation at all times and particularly following rain storms. The temporarily diverted drainage should be reinstated to its original condition when the construction work has finished or the temporary diversion is no longer required.	Contractor	All relevant worksites	Implemented
		<u>Stormwater Discharges</u>			
		Minimum distances of 100 m should be maintained between the existing or planned stormwater discharges and the existing or planned seawater intakes.	Contractor	All relevant worksites	Implemented
		<u>Sewage Effluent</u>			
		Construction work force sewage discharges on site are expected to be connected to the existing trunk sewer or sewage treatment facilities. The construction sewage may need to be handled by portable chemical toilets prior to the commission of the on-site sewer system. Appropriate numbers of portable toilets should be provided by a licensed contractor to serve the large number of construction workers over the construction site. The Contractor should also be responsible for waste disposal and maintenance practices.	Contractor	All relevant worksites	Implemented



# MATERIALAB CONSULTANTS LIMITED

Room 723 & 725, 7/F, Block B,  
Profit Industrial Building,  
1-15 Kwai Fung Crescent, Kwai Fong,  
Hong Kong.

Tel : +852 2450 8238  
Fax : +852 2450 8032  
E-mail : mcl@fugro.com  
Website : www.fugro.com



EIA Ref	EM&A Ref	Environmental Protection Measures / Mitigation Measures	Who to implement the measure	Location / Timing	Construction Phase Implementation Status
		<u>Debris and Litter</u>			
		In order to maintain water quality in acceptable conditions with regard to aesthetic quality, contractors should be required, under conditions of contract, to ensure that site management is optimised and that disposal of any solid materials, litter or wastes to marine waters does not occur. Debris and refuse generated on-site should be collected, handled and disposed of properly to avoid entering into the adjacent harbour waters. Stockpiles of cement and other construction materials should be kept covered when not being used.	Contractor	All relevant worksites	Implemented
		<u>Accidental Spillage</u>			
		Oils and fuels should only be used and stored in designated areas which have pollution prevention facilities. To prevent spillage of fuels and solvents to the nearby harbour waters, all fuel tanks and storage areas should be provided with locks and be sited on sealed areas, within bunds of a capacity equal to 110% of the storage capacity of the largest tank, to prevent spilled fuel oils from reaching the coastal waters of the Victoria Harbour WCZ. The bund should be drained of rainwater after a rain event.	Contractor	All relevant worksites	Implemented
<u>Waste Management Measures</u>					
		<u>Waste Management Plan</u>			
AEIAR-174/2013 S11.4.8.1	AEIAR-174/2013 EM&A Manual S9.2.1.2	Contractor should be requested to submit an outline Waste Management Plan (WMP) prior to the commencement of construction work, in accordance with the ETWB TC(W) No.19/2005 so as to provide an overall framework of waste management and reduction.	Contractor	All relevant worksites	Implemented
		<u>Good Site Practices</u>			
AEIAR-130/2009 S3.5, S5.5	AEIAR 130/2009 EM&A Manual S2.5, S4.5	Nomination of an approved person, such as a site manager, to be responsible for good site practices, arrangements for collection and effective disposal to an appropriate facility, of all wastes generated at the site.	Contractor	All relevant worksites	Implemented
		Training of site personnel in proper waste management and chemical waste handling procedures.	Contractor	All relevant worksites	Implemented
		Provision of sufficient waste disposal points and regular collection for disposal.	Contractor	All relevant worksites	Implemented
		Appropriate measures to minimize windblown litter and dust during transportation of waste by either covering trucks or by transporting wastes in enclosed containers.	Contractor	All relevant worksites	Implemented
		A recording system for the amount of wastes generated, recycled and disposed of (including the disposal sites).	Contractor	All relevant worksites	Implemented
		<u>Waste Reduction Measures</u>			

The copyright of this document is owned by MaterialLab Consultants Ltd. It may not be reproduced except with prior written approval from the Company.

# MATERIALAB CONSULTANTS LIMITED

Room 723 & 725, 7/F, Block B,  
Profit Industrial Building,  
1-15 Kwai Fung Crescent, Kwai Fong,  
Hong Kong.

Tel : +852 2450 8238  
Fax : +852 2450 8032  
E-mail : mcl@fugro.com  
Website : www.fugro.com



EIA Ref	EM&A Ref	Environmental Protection Measures / Mitigation Measures	Who to implement the measure	Location / Timing	Construction Phase Implementation Status
		Sort C&D waste from demolition of the remaining structures to recover recyclable portions such as metals.	Contractor	All relevant worksites	Implemented
		Segregation and storage of different types of waste in different containers, skips or stockpiles to enhance reuse or recycling of materials and their proper disposal.	Contractor	All relevant worksites	Implemented
		Encourage collection of aluminum cans, PET bottles and paper by providing separate labelled bins to enable these wastes to be segregated from other general refuse generated by the work force.	Contractor	All relevant worksites	Implemented
		Any unused chemicals or those with remaining functional capacity should be recycled.	Contractor	All relevant worksites	Implemented
		Proper storage and site practices to minimize the potential for damage or contamination of construction materials.	Contractor	All relevant worksites	Implemented
		<u>Construction and Demolition Materials</u>			
		Where it is unavoidable to have transient stockpiles of C&D material within the work site pending collection for disposal, the transient stockpiles shall be located away from waterfront or storm drains as far as possible.	Contractor	All relevant worksites	Implemented
		Open stockpiles of construction materials or construction wastes on-site should be covered with tarpaulin or similar fabric.	Contractor	All relevant worksites	Implemented
		Skip hoist for material transport should be totally enclosed by impervious sheeting.	Contractor	All relevant worksites	Implemented
		Every vehicle should be washed to remove any dusty materials from its body and wheels before leaving a construction site.	Contractor	All relevant worksites	Implemented
		The area where vehicle washing takes place and the section of the road between the washing facilities and the exit point should be paved with concrete, bituminous materials or hardcores.	Contractor	All relevant worksites	Implemented
		The load of dusty materials carried by vehicle leaving a construction site should be covered entirely by clean impervious sheeting to ensure dust materials do not leak from the vehicle.	Contractor	All relevant worksites	Implemented
		All dusty materials should be sprayed with water prior to any loading, unloading or transfer operation so as to maintain the dusty materials wet.	Contractor	All relevant worksites	Implemented
		The height from which excavated materials are dropped should be controlled to a minimum practical height to limit fugitive dust generation from unloading.	Contractor	All relevant worksites	Implemented
		When delivering inert C&D material to public fill reception facilities, the material should consist entirely of inert construction waste and of size less than 250mm or other sizes as agreed with the Secretary of the Public Fill Committee. In order to monitor the disposal of the surplus C&D	Contractor	All relevant worksites	Implemented

The copyright of this document is owned by MaterialLab Consultants Ltd. It may not be reproduced except with prior written approval from the Company.

# MATERIALAB CONSULTANTS LIMITED

Room 723 & 725, 7/F, Block B,  
Profit Industrial Building,  
1-15 Kwai Fung Crescent, Kwai Fong,  
Hong Kong.

Tel : +852 2450 8238  
Fax : +852 2450 8032  
E-mail : mcl@fugro.com  
Website : www.fugro.com



EIA Ref	EM&A Ref	Environmental Protection Measures / Mitigation Measures	Who to implement the measure	Location / Timing	Construction Phase Implementation Status
		material at the designed public fill reception facility and to control fly tipping, a trip-ticket system as stipulated in the ETWB TCW No. 31/2004 "Trip Ticket System for Disposal of Construction and Demolition Materials" should be included as one of the contractual requirements and implemented by an Environmental Team undertaking the Environmental Monitoring and Audit work. An Independent Environmental Checker should be responsible for auditing the results of the system.			
		<u>Chemical Waste</u> After use, chemical wastes (for example, cleaning fluids, solvents, lubrication oil and fuel) should be handled according to the Code of Practice on the Packaging, Labelling and Storage of Chemical Wastes. Spent chemicals should be collected by a licensed collector for disposal at the CWTF or other licensed facility, in accordance with the Waste Disposal (Chemical Waste) (General) Regulation.	Contractor	All relevant worksites	Implemented
		<u>General Refuse</u> General refuse should be stored in enclosed bins or compaction units separate from C&D material. A licensed waste collector should be employed by the contractor to remove general refuse from the site, separately from C&D material. Effective collection and storage methods (including enclosed and covered area) of site wastes would be required to prevent waste materials from being blown around by wind, wastewater discharge by flushing or leaching into the marine environment, or creating odour nuisance or pest and vermin problem.	Contractor	All relevant worksites	Implemented
<u>Land Contamination Measures</u>					
		<u>For any excavation works conducted at Radar Station</u>			
AEIAR-130/2009 S3.6.57	AEIAR 130/2009 EM&A Manual S4.6	As the risk due to dermal contact with groundwater by site workers is uncertain, it is recommended that personnel protective equipment (PPE) be used by site workers as a mitigation measure.	Contractor	All relevant worksites	Not Applicable
<u>Landscape and Visual Impact</u>					
<u>New Distributor Roads Serving the Planned KTD</u>					
		<u>Construction Phase</u>			
AEIAR-130/2009 S3.8.12	AEIAR 130/2009 EM&A Manual S2.8	All existing trees should be carefully protected during construction.	Contractor	All relevant worksites	Not Applicable
		Trees unavoidably affected by the works should be transplanted where practical. Detailed transplanting proposal will be submitted to relevant government departments for approval in	Contractor	All relevant worksites	Not Applicable

# MATERIALAB CONSULTANTS LIMITED

Room 723 & 725, 7/F, Block B,  
Profit Industrial Building,  
1-15 Kwai Fung Crescent, Kwai Fong,  
Hong Kong.

Tel : +852 2450 8238  
Fax : +852 2450 8032  
E-mail : mcl@fugro.com  
Website : www.fugro.com



EIA Ref	EM&A Ref	Environmental Protection Measures / Mitigation Measures	Who to implement the measure	Location / Timing	Construction Phase Implementation Status
		accordance with ETWBC 2/2004 and 3/2006. Final locations of transplanted trees should be agreed prior to commencement of the work.			
		Control of night-time lighting.	Contractor	All relevant worksites	Not Applicable
		Erection of decorative screen hoarding.	Contractor	All relevant worksites	Not Applicable
<b>Trunk Road T2</b>					
		<u>Construction Phase</u>			
AEIAR-174/2013 S9.9.1.1	AEIAR-174/2013 EM&A Manual S7.2.1.2	All works shall be carefully designed to minimize impacts on existing landscape resources and visually sensitive receivers. Existing trees within works area shall be retained and protected.	Contractor	All relevant worksites	Not Applicable
		Existing trees of good quality and condition that are unavoidably affected by the works should be transplanted.	Contractor	All relevant worksites	Not Applicable
		Large temporary stockpiles of excavated material shall be covered with unobtrusive sheeting to prevent dust and dirt spreading to adjacent landscape areas and vegetation, and to create a neat and tidy visual appearance.	Contractor	All relevant worksites	Not Applicable
		Construction plant and building material shall be orderly and carefully stored in order to create a neat and tidy visual appearance.	Contractor	All relevant worksites	Partially Implemented
		Erection of decorative screen hoarding should be designed to be compatible with the existing urban context.	Contractor	All relevant worksites	Not Applicable
		All lighting in construction site shall be carefully controlled to minimize light pollution and night-time glare to nearby residences and GIC user. The contractor shall consider other security measures, which shall minimize the visual impacts.	Contractor	All relevant worksites	Not Applicable
<b>General Condition</b>					
		The Permit Holder shall display conspicuously a copy of this Permit on the Project site(s) at all vehicular site entrances/exits or at a convenient location for public's information at all times. The Permit Holder shall ensure that the most updated information about the Permit, including any amended Permit, is displayed at such locations. If the Permit Holder surrenders a part or the whole of the Permit, the notice he sends to the Director shall also be displayed at the same locations as the original Permit. The suspended, varied or cancelled Permit shall be removed from display at the Project site(s).	Contractor	All relevant worksites	Implemented

Implementation status: Implemented / Partially Implemented / Not Implemented / Not Applicable